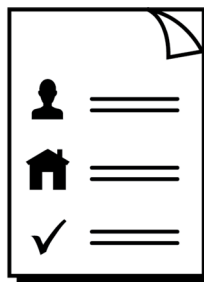


MOUNT GAMBIER



## Community vision for Mount Gambier to 2035



Easy Read

## About this book



This book is from the City of Mount Gambier.

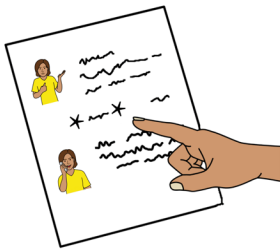


We work on Aboriginal land.

We respect Aboriginal elders.



This book is written in a way that is easy to understand.



We add a star before and after **\*hard words\***.

Then we explain what the words mean.



You can ask someone to help you read and understand this book.



Contact information is at the end of this book.

## About our \*community vision\*



Our community vision says what we want our community to look like in the future.

We will call this our plan.



We asked people who live, work and study in Mount Gambier to help us make the plan.



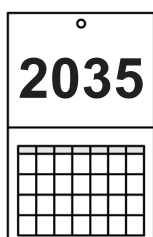
Everyone who lives, works, studies or visits Mount Gambier will help make our plan happen.

This book is a summary of the plan.



You can read the full plan on our [Mount Gambier 2035 webpage](https://www.mountgambier.sa.gov.au/council/strategic-documents/mount-gambier-2035)

[www.mountgambier.sa.gov.au/council/strategic-documents/mount-gambier-2035](https://www.mountgambier.sa.gov.au/council/strategic-documents/mount-gambier-2035)



Our plan goes to 2035.

## What the plan says



We want our community to reflect our shared **\*values\***.

Values are things that are important to us.



Our shared values are

- **\*family\***
  - this means we support each other and find meaning in our community



- **\*connection\***
  - this means we bring people, cultures, services and nature together



- **\*growth\***
  - this means we grow by hearing new ideas and supporting everyone



- **\*natural environment\***
  - this means we protect nature and keep our environment safe.

## Our **\*strategic priorities\***



Strategic priorities means important things we will do to achieve our goals.



There are 5 **\*strategic priorities\*** in the plan.

### 1. **\*Environment and liveability\***



This means what we will do to make sure the land and places in our community are **\*accessible\*** and cared for.



Accessible means everyone can go to and use places and spaces.



We will protect and care for nature and outdoor places and spaces.



We understand that nature and outdoor spaces make this a good place to live, work and visit.

## 2. \*Learning and innovation\*



This means we are a place where people can learn and develop skills needed to make our community a better place.



We will make sure there are education and learning options for people of all ages.



We will bring in experts to help us live, learn and grow.



We will support ideas for growth in business.

We offer a good place for professionals to grow and do well in their jobs.

### 3. \*Infrastructure and services\*



This means all of the supports and services needed for a safe, happy and healthy community.



We will make sure our community has good access to supports and services.



For example

- aged care



- emergency and health services



- housing



- public transport



- child services

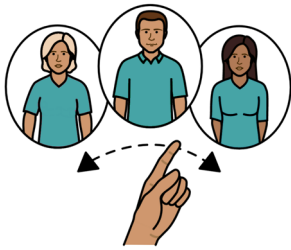


- sport and activity places and spaces.

#### 4. \*Economic and business growth\*



This means businesses in our community are supported to grow and do well.



We will make sure there are lots of different businesses in the community for the things and services everyone needs.



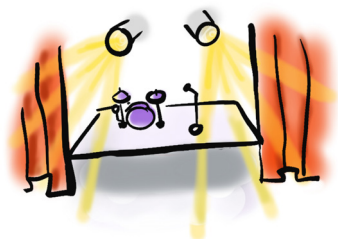
We will support businesses to grow and make more jobs for people in our community.



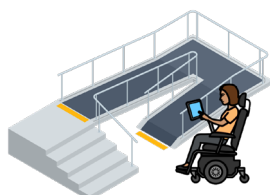
We will help bring more tourists to Mount Gambier to support local business.



## 5. A **\*vibrant community\***



This means there are lots of events, activities and sports for everyone to enjoy.



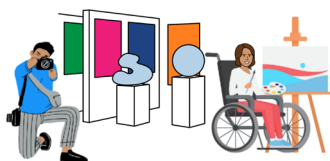
We will have regular events that are accessible.



We will help make more opportunities for people to volunteer at events.



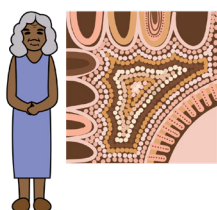
We will make sure there are lots of different events and activities.



We will have events that celebrate **\*diversity\*** and **\*culture\***.



Diversity means differences.



Culture means the way of life for groups of people.

When people do things and make choices for our community, they should focus on things being



- **\*connected\***



- accessible and **\*inclusive\***



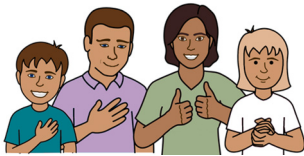
- **\*sustainable\***.

## Connected means

- we find ways to connect our priorities to make things better for our community



- we grow stronger by working with others.



Inclusive means everyone feels welcome and included.



Sustainable means our community can develop in ways that support the future of the land and nature.



## More information

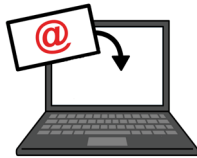


City of  
Mount Gambier

For more information contact the  
City of Mount Gambier.



**Call** 08 8721 2555



**Email** [city@mountgambier.sa.gov.au](mailto:city@mountgambier.sa.gov.au)



**Website** [City of Mount Gambier website](http://www.mountgambier.sa.gov.au)  
[www.mountgambier.sa.gov.au](http://www.mountgambier.sa.gov.au)



**Visit us** Civic Centre  
10 Watson Terrace  
Mount Gambier  
South Australia  
From 9 am to 5 pm



## Help to speak and listen

If you need help to speak or listen, the National Relay Service can help you make a call.

**Call** 1800 555 660

**Website** [NRS Helpdesk](#)

[www.accesshub.gov.au/about-the-nrs/nrs-helpdesk](http://www.accesshub.gov.au/about-the-nrs/nrs-helpdesk)

## Help in your language



If you need help with other languages, contact the Translating and Interpreting Service.

**Call** 131 450

**Website** [TIS National](#)

[www.tisnational.gov.au](http://www.tisnational.gov.au)

Easy Read Australia created this Easy Read document in January 2025 using Picture Communication Symbols (PCS). PCS and Boardmaker are trademarks of Tobii Dynavox LLC. All rights reserved. Used with permission. You must ask for permission to use the images in this document. For more information, please visit [Easy Read Australia](http://www.easyreadaust.com.au) [www.easyreadaust.com.au](http://www.easyreadaust.com.au)