



2021/2022 ANNUAL BUSINESS PLAN AND BUDGET SUMMARY



The 2021/2022 Annual Business Plan and Budget outlines the program of work the City of Mount Gambier will undertake as we enter the new financial year.

This budget continues to ensure that service delivery is maintained while Council oversees the development of its largest ever infrastructure

project, the Wulanda Recreation and Convention Centre. Construction on site at Olympic Park on Margaret Street, Mount Gambier is expected to be completed in Autumn 2022 and I am very excited for the community to have access to this much needed state of the art facility. Wulanda will be a place for all, providing aquatic, sports, cultural, youth, café and creche facilities as well as a convention space for the benefit of the entire community.

I am pleased to share that in recent months Council secured \$800,000 in State Government funding to extend the shared cycling/walking path from Wandilo Road to Wireless Road and install solar lighting along the total length, spanning 11.3 kilometres. Council will match this funding amount dollar for dollar and work on the path is expected to be undertaken within the next year.

To ensure Council's priorities reflect the needs of our community, annual financial planning and budgeting is undertaken with long-term goals in mind. This summary includes information about how the budget will be spent to deliver services and programs to the community, developed within the context of Council's commitment to financial sustainability and long term financial planning.

I hope that you find this information to be a useful overview of Council's focus for the year ahead and I welcome any questions or feedback.

Lynette Martin OAM
MAYOR



As the new CEO of the City of Mount Gambier I am already impressed by the dedication of Elected Members and Council staff who endeavour to make our city the best it can be for our residents.

Our budget is all about delivering great services and facilities to you, our community, and to visitors to

our city. In accordance with Council's Long Term Financial Plan, the 2021/2022 total rate revenue percentage increase is 4.5% including the new Waste Service Charge (WSC). Therefore, the average residential ratepayer will pay \$1,312 in 2021/2022. This is an increase of \$65.00, equating to \$1.25 per week. In comparison, Council's average residential rate is below the South Australian average which was \$1,662 for metropolitan areas and \$1,471 for rural areas in 2020/2021.

As of 1 July 2021, Council has implemented a Waste Service Charge (WSC) to highlight the cost of waste management on rate notices. It is important to note that this \$200 charge is not an additional cost to most ratepayers, as it is already included within the total General Rate Revenue and will be separated out as an additional line item on your rates notice. Council hopes the WSC will encourage ratepayers to consider their personal environmental impact and the costs associated with waste management and does not intend to raise overall rates and charges associated with the WSC.

I trust that this budget will deliver some exciting new projects, maintain services that you already use and value, and see progress on our major project, Wulanda. I will be out and about within the community as much as possible and I look forward to meeting you to discuss Council and the future of our city.

Sarah Philpott
CEO



263 trees

planted as part of the 2020/2021 street tree program



3,200 tonnes

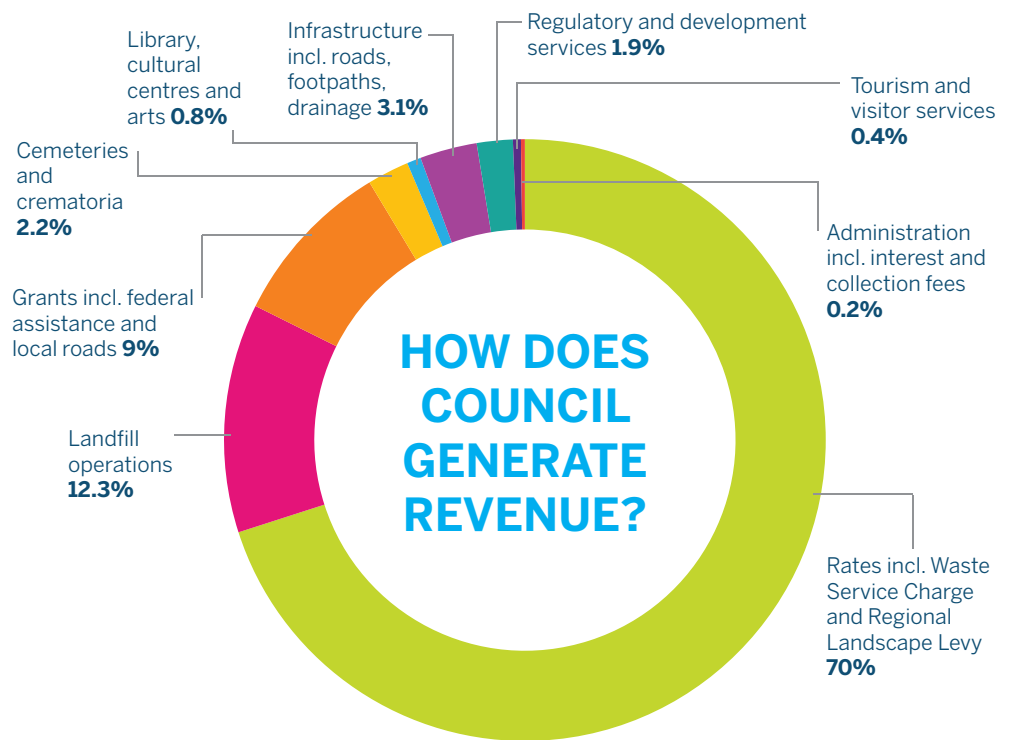
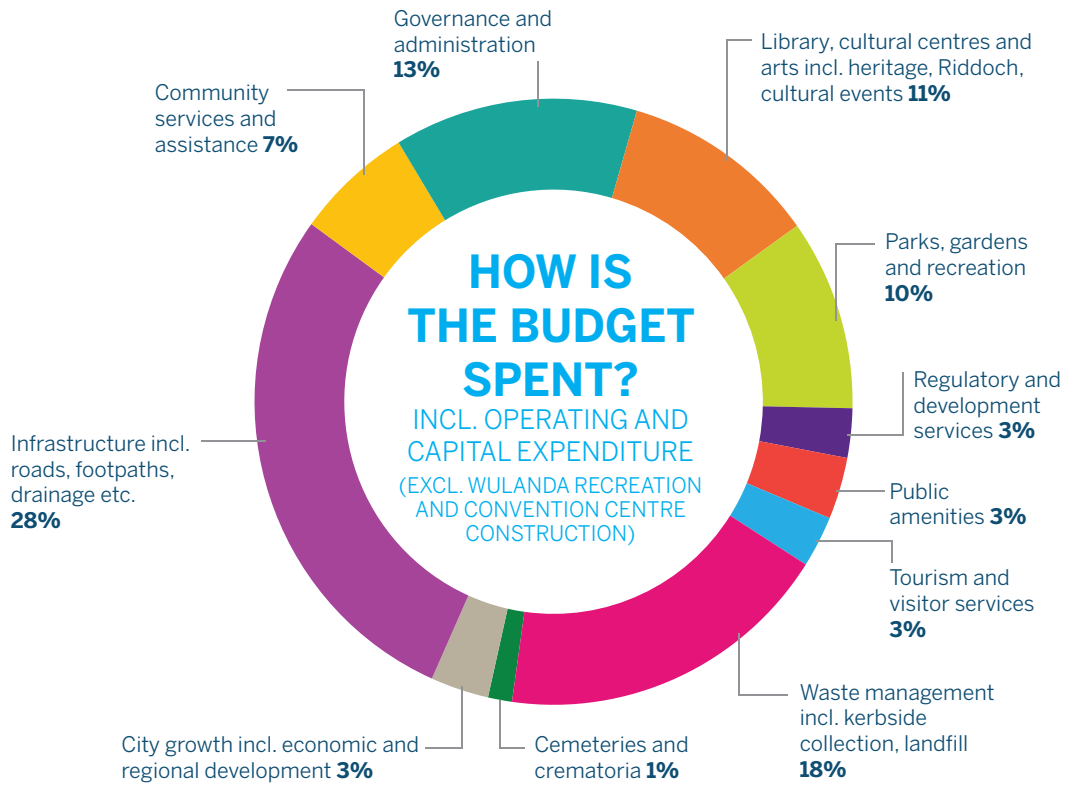
of FOGO collected and saved from landfill in 2020/2021



\$238m worth of assets responsibly managed



12,350 program participants at the Mount Gambier Library in 2020/2021



2020/2021 KEY OUTCOMES

Stage four Rail Trail extension



Our City. Our Response COVID-19 initiatives



Railway Station external restoration



2021/2022 BUDGET INFLUENCES

The delivery of services such as the Library, Mount Gambier Visitor Information Services, The Riddoch Arts & Cultural Centre, parks, gardens, infrastructure and asset maintenance, waste collection and disposal continue to represent significant components of Council's budget.

Key highlights in the budget include:

- Railway Lands play space - **\$300,000**
- Valley Lakes toilet refurbishment - **\$400,000**
- Library upgrades - **\$145,000**
- Extension of the shared walking/cycling path from Wandilo Road to Wireless Road and installation of solar lighting (including \$800,000 in State Government funding) - **\$1,100,000**
- 12 new footpaths included in the works program - **\$374,125**
- 20 roads included in the road reconstruction program - **\$2,121,500**
- Construction of new waste cell for Caroline Landfill and capping of old cell - **\$2,009,087**

Other key influences on the budget include:

- A focus on economic development including tourism and the development of a strategic plan for the city's tourism assets.
- Continuing investment to promote Mount Gambier as a visitor destination, a regional retail and commercial hub and as a quality destination to host major events and conferences.
- Development of the Mount Gambier Sport, Recreation and Open Space Strategy, informed by community feedback.
- Continuing construction of the Wulanda Recreation and Convention Centre.

OTHER SERVICES

In 2021/2022 approximately 70% of the City of Mount Gambier's operating revenue will come from rates. This revenue is used to provide mandatory and discretionary services to the community.

All councils have mandatory responsibilities under the *Local Government Act 1999* and other relevant legislation. In response to community needs, Council also provides many discretionary services, programs and support. These include but are not limited to:

- Animal control
- Building and planning regulation
- Community development and engagement
- Economic development
- Environmental health
- Environmental sustainability initiatives
- Event support
- Riddoch Art and Cultural Centre
- Sport and recreation facilities
- Tourism and visitor services
- Citizenship ceremonies
- Library programs and services
- Sponsorship and community grants
- Free public WiFi
- Cemeteries
- Youth programs.

CORE SERVICES



Kerbside waste and recycling collection and disposal
\$2.4m



Parks, gardens and reserves maintenance
\$3.1m



Roads, footpaths and drainage construction and maintenance
\$8.2m



Public amenities and streetscaping
\$4.2m

2021/2022 KEY INITIATIVES

Wulanda Recreation and Convention Centre construction



Rail Trail extension from Wandilo Road to Wireless Road



Railway Lands play space additions



HOW RATES ARE DETERMINED

To determine the amount of rates payable by each ratepayer, Council uses a formula based on property values. The formula divides the total amount of rates required by the total value of all rateable properties in the Council area, while incorporating a fixed charge. The outcome of the formula is the determination of the rate in the dollar, including differential rates in the dollar for different land uses, which is applied to each rateable property.

The City of Mount Gambier uses a combination of a fixed charge on every rateable property and a differential or variable rating system, based on land use.



14,416
rateable
properties



27,433
residents in the
City of Mount
Gambier

AVERAGE RATES

	2019/ 2020	2020/ 2021
SA metro councils	\$1,643	\$1,662
SA rural councils	\$1,438	\$1,471
City of Mount Gambier	\$1,238	\$1,247

City of Mount Gambier's average residential rate of \$1,312 is below the South Australian average which in 2020/2021 was \$1,662 for metropolitan areas and \$1,471 for rural areas.*

**Based on the Local Government of South Australia rates survey 2020/2021*

In 2021/2022, the differential or variable rating component that raises the remainder of Council's gross general rate revenue is determined by multiplying the individual property value (capital value provided by State Valuation Office) by the differential rate in the dollar adopted for each separate land use category. Overall capital value, inclusive of all categories of rateable land (residential, commercial, industry, primary production and vacant land) increased by 4.4% within the city boundaries in 2021/2022. Individual rates payable are dependent on the capital value of a property.

Council has determined that it will require an increase in the overall general rate revenue equivalent to 4.5%. In 2020/2021 Council did not apply a blanket rate increase due to COVID-19.

RATES ASSISTANCE

Council encourages ratepayers who are experiencing financial difficulties and are unable to meet the standard rate payment arrangement to contact the Rates office at the earliest opportunity to discuss options for alternative payment arrangements. Council encourages ratepayers to communicate with Council to arrange a flexible approach to debt recovery. Payment arrangements can be negotiated and all enquiries are treated confidentially.

HOW THE BUSINESS PLAN AND BUDGET IS DEVELOPED

The Annual Business Plan and Budget is set and endorsed by the Elected Members of the City of Mount Gambier.

Elected Member workshops were held during the budget process to consider and discuss the cost of services and projects.

Community members were invited to provide feedback on the Draft 2021/2022 Annual Business Plan and Budget by written submission.

On 29 June 2021 Elected Members adopted the budget for the 2021/2022 financial year.

WASTE SERVICE CHARGE (WSC)

To highlight the cost of waste management, Council has adjusted its rating structure to remove the waste component from the General Rates and introduce it as a new separate fixed Waste Service Charge (WSC).

To find out more about the WSC please refer to the enclosed fact sheet.

