

Crater Lakes Trails Quick Reference Guide

CITY OF MOUNT GAMBIER





City of
Mount Gambier



OPEN TRAILS
AUSTRALIA

Status	Changes	Author	Reviewer	Date
Draft V1		K Gardner	H Rowe	August 2023
Final	Map updates	K Gardner	E Solly	November 2023

This report was prepared by Open Trails Australia Pty Ltd for the City of Mount Gambier in relation to the Crater Lakes Trails network.

Disclaimer

Any representation, statement, opinion or advice, expressed or implied in this document is made in good faith but on the basis that Open Trails Australia, directors, employees and associated entities are not liable for any damage or loss whatsoever which has occurred or may occur in relation to taking or not taking action in respect of any representation, statement or advice referred to in this document.

Acknowledgement

We acknowledge the Indigenous peoples of the lands, waters and communities we work together with. We pay our respect to their cultures; and to their Elders – past, present and emerging.

Contents

Introduction	4
Blue Gums Ride	5
Blue Gums Walk	7
Blue Lake Circuit	9
Droptail	11
Full Wam	13
Grassy Hill Trail	15
Hike A	17
Hike B	19
Hike C	21
JJ Trail	23
Leg of Mutton/Yatton Loo Lake Trail	25
Leg of Mutton/Yatton Loo Link Trail	27
Lower MTB Trail	29
Marist Park Downhill Trails	30
Mazdos Masterpiece	32
Mountain Trail	34
Mountain Trail Alternate Section	34
Nurses Curses	36
Outa Mutton	38
Pepper Pot Rook Walk	40
Pepper Pot Rook Walk Alternative	40
Right Leg Down	42
Tombstones	44
Tower Up	46
Valley Lake Conservation Park Trails	48
Wheel Nuts	50
Appendices	52
Appendix A – Australian Walking Track Grading System	52
Appendix B – Australian Mountain Bike Trail Classification System	54
Appendix C - IPWEA Condition Assessment	55

Introduction

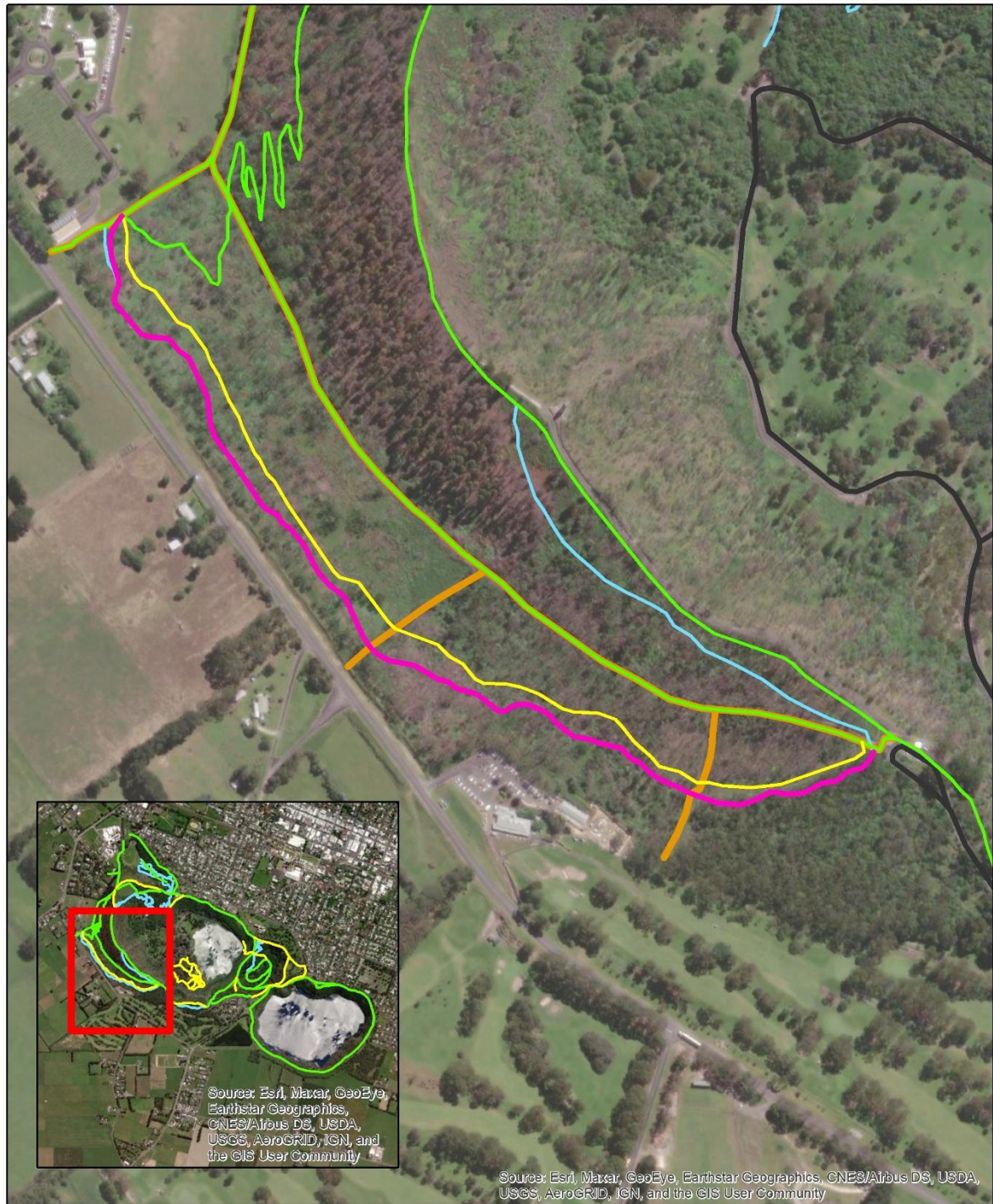
The Crater Lakes Trails Quick Reference Guide is a snapshot of the trails status, condition and value as of October 2023. This guide was prepared as part of the broader Crater Lakes Trails and Sign Planning exercise requested by the City of Mount Gambier.

The trail tables explained.

Trail Name	Name of trail
Land Tenure	Owner and manager of the trail
Trail Category	Dedicated to walking, bike or shared-use (as of Oct 23)
Trail Classification	Trail difficulty classification in current condition (see appendix A and B for details)
Trail Description	General width and surface type
Trail Length	Length of trail
Trail Signage	Signage for trail
Trail Structures	Structures installed on the trail
Trail Surrounds	Vegetation types around the trail
Stakeholders & users	Anecdotal observations of trail users and advocates
Est. Capital Value	Value if trail was to built by contractor in 2023
Current IPWEA score	Condition score according to IPWEA guidelines. (see appendix C for details)
Works required	General works required to improve safety, sustainability, and functionality of the trail. Does not include more significant upgrades that are covered in the Trail Plan Report detail.

Blue Gums Ride

Trail Name	Blue Gums Ride
Land Tenure	Crater Lakes Trail Network, City of Mt Gambier
Trail Category	Bike Only
Trail Classification	MTBA: Easy with some intermediate
Trail Description	Natural surface open single track. 1-2m wide
Trail Length	1100m
Trail Signage	To be installed. Update inventory on completion.
Trail Structures	nil
Trail Surrounds	Open woodland
Stakeholders & users	Popular for mountain bike riding.
Est. Capital Value	\$33,000
Current IPWEA score	3
Works required	Fallen trees to remove on first quarter of trail. Trim encroaching branches/shrubs. Re-shape drainage. Herbicide ground cover vegetation on trail edge.



Legend

- Walking_Trails_Combined
- Shared_Trails_Combined
- Cycling_Trails_Combined
- Management_Vehicle_Access_Track

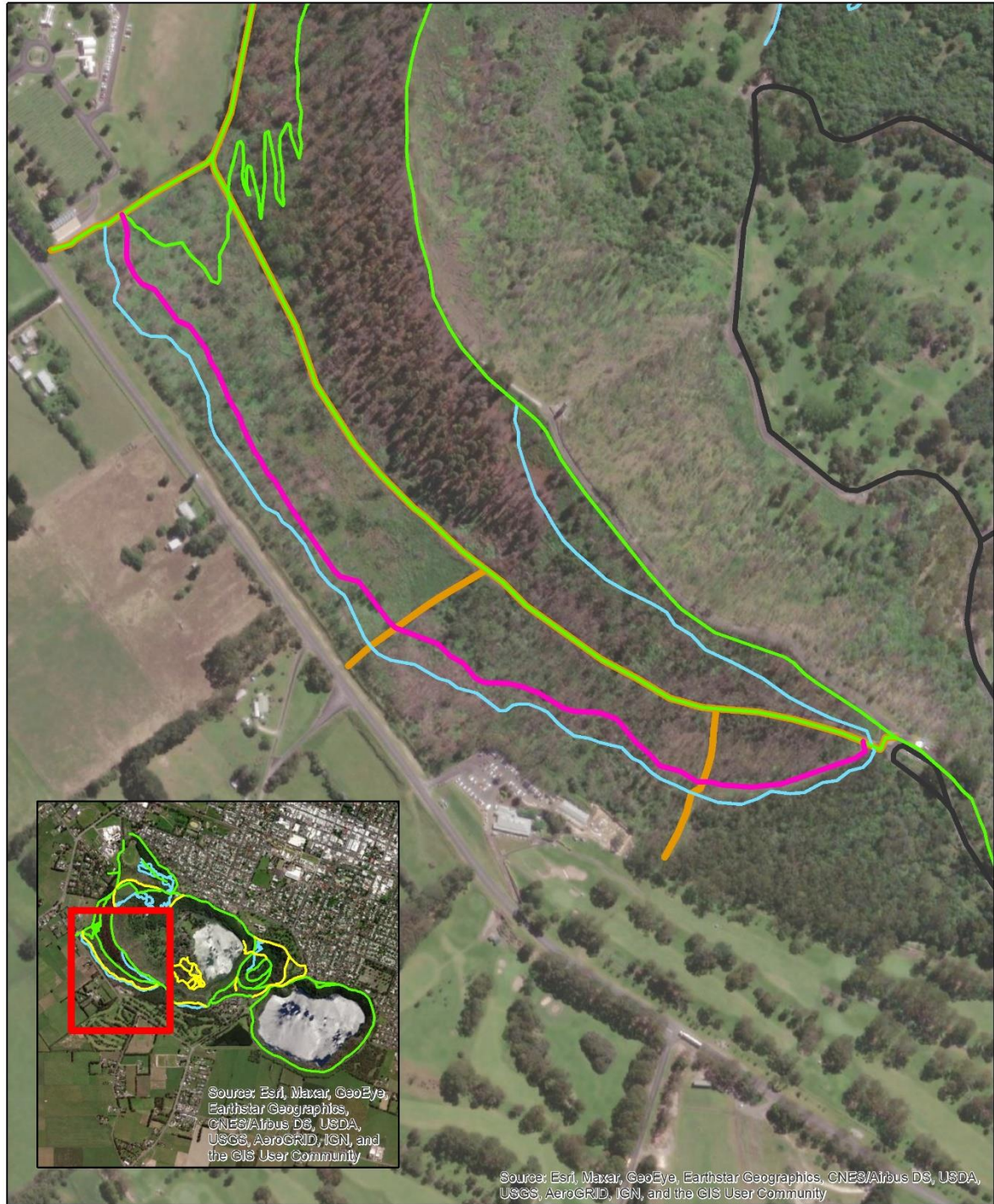
Crater Lakes Trails Blue Gums Ride

0 70 140 280 Meters



Blue Gums Walk

Trail Name	Blue Gums Walk
Land Tenure	Crater Lakes Trail Network, City of Mt Gambier
Trail Category	Walk only
Trail Classification	AS2156: Grade 3
Trail Description	Natural surface open single track. 1-2m wide
Trail Length	1100m
Trail Signage	To be installed. Update inventory on completion.
Trail Structures	nil
Trail Surrounds	Open woodland
Stakeholders & users	Popular for trail running and walking.
Est. Capital Value	\$33,000
Current IPWEA score	3
Works required	Trim encroaching branches/shrubs. Re-shape drainage. Herbicide ground cover vegetation on trail edge.



Legend

- Walking_Trails_Combined
- Shared_Trails_Combined
- Cycling_Trails_Combined
- Management_Vehicle_Access_Track

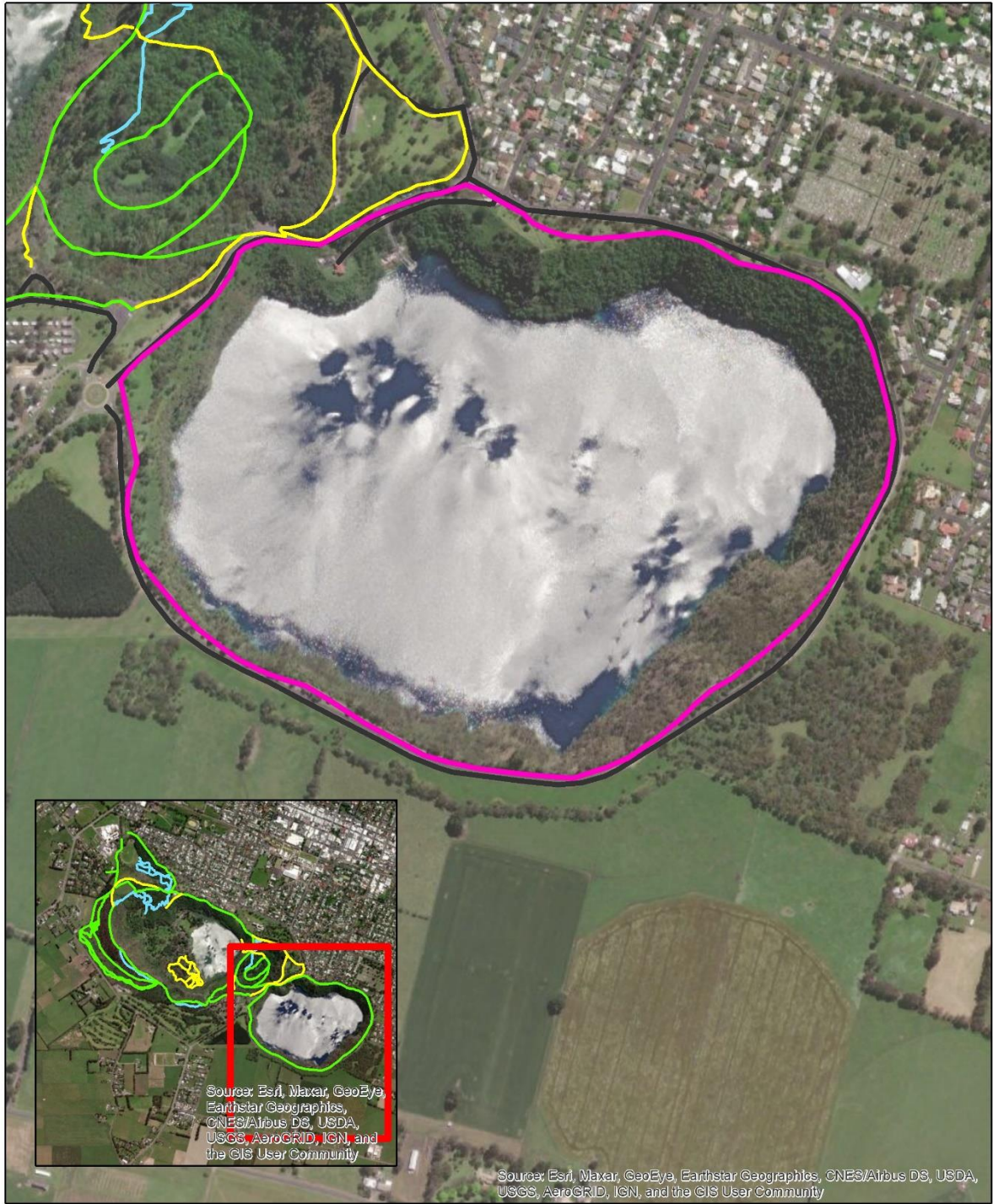
Crater Lakes Trails Blue Gums Walk

0 70 140 280 Meters



Blue Lake Circuit

Trail Name	Blue Lake Circuit
Land Tenure	Crater Lakes Trail Network, City of Mt Gambier
Trail Category	Shared-Use (Walking, running, cycling)
Trail Classification	MTBA: Easy with some intermediate AS2156: Grade 3
Trail Description	Concrete Path. 1.2m wide
Trail Length	3550m
Trail Signage	To be installed. Update inventory on completion.
Trail Structures	Some lookouts and benches provided off the trail. Solar Lights.
Trail Surrounds	Bound by verge and Roads.
Stakeholders & users	Popular for tourists and community trail running and walking.
Est. Capital Value	\$710,000
Current IPWEA score	1.
Works required	Monitor cracking and undermining on Horrocks Road section. Repair solar lights that do not function.



Legend

- Walking_Trails_Combined
- Shared_Trails_Combined
- Cycling_Trails_Combined
- Management_Vehicle_Access_Track

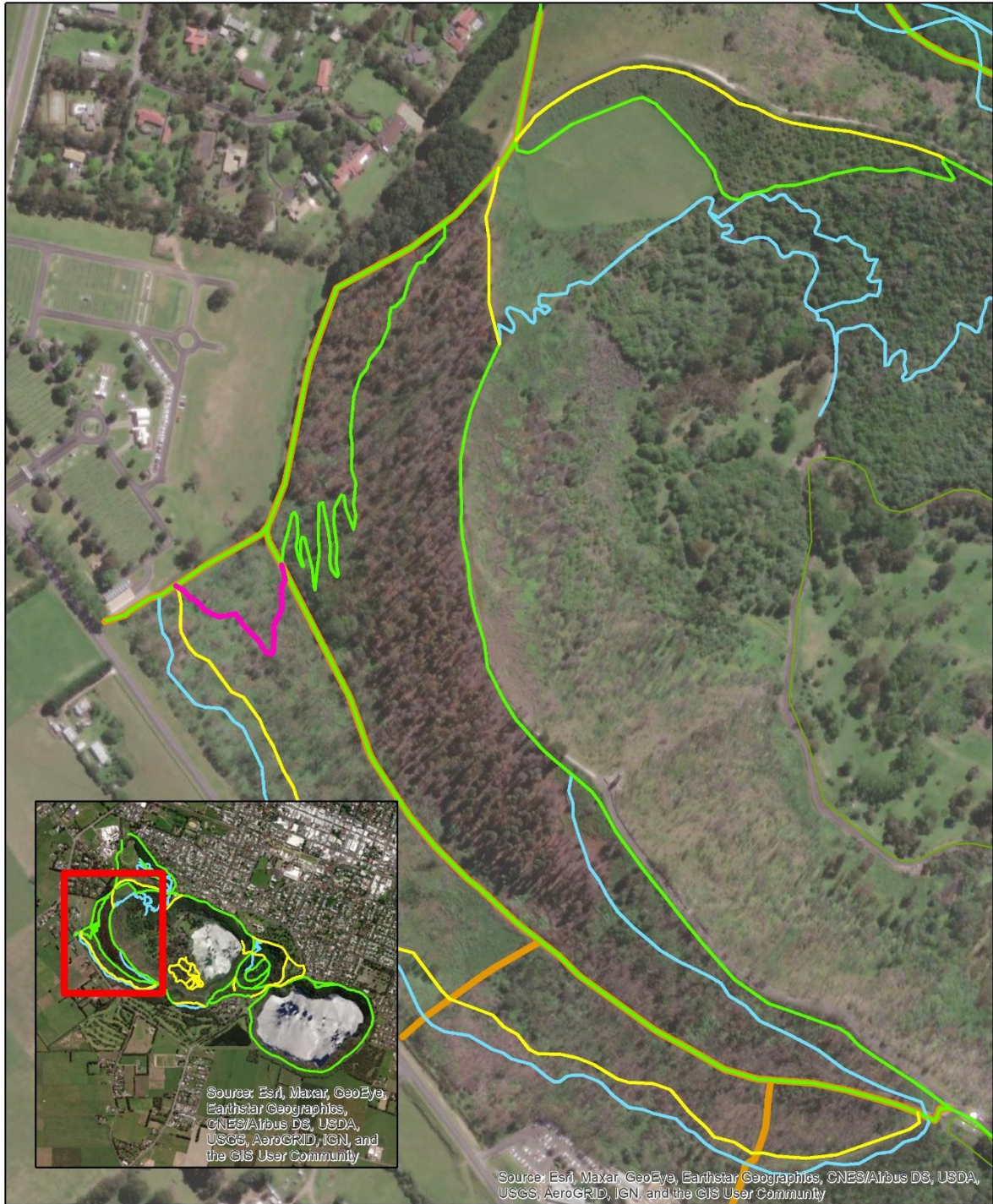
Crater Lakes Trails Blue Lake Circuit

0 112.5 225 450 Meters



Droptail

Trail Name	Droptail
Land Tenure	Crater Lakes Trail Network, City of Mt Gambier
Trail Category	Shared-Use (Walking, running, cycling)
Trail Classification	MTBA: Intermediate AS2156: Grade 4
Trail Description	Natural surface singletrail. Mostly used as a climbing trail as an alternative to steep fire track nearby.
Trail Length	226m
Trail Signage	To be installed. Update inventory on completion.
Trail Structures	nil
Trail Surrounds	Open woodland
Stakeholders & users	Popular for cycling, trail running and walking. Connects to JJ Trail.
Est. Capital Value	\$5650
Current IPWEA score	4 – Trail currently closed due to previous fire and access to area being restricted.
Works required	Fallen trees to remove. Trail is currently overgrown with regrowth and requires clearing. Re-shape trail to original condition.



Legend

- Walking_Trails_Combined
- Shared_Trails_Combined
- Cycling_Trails_Combined
- Management_Vehicle_Access_Track

Crater Lakes Trails Drop Tail Shared-Use Trail

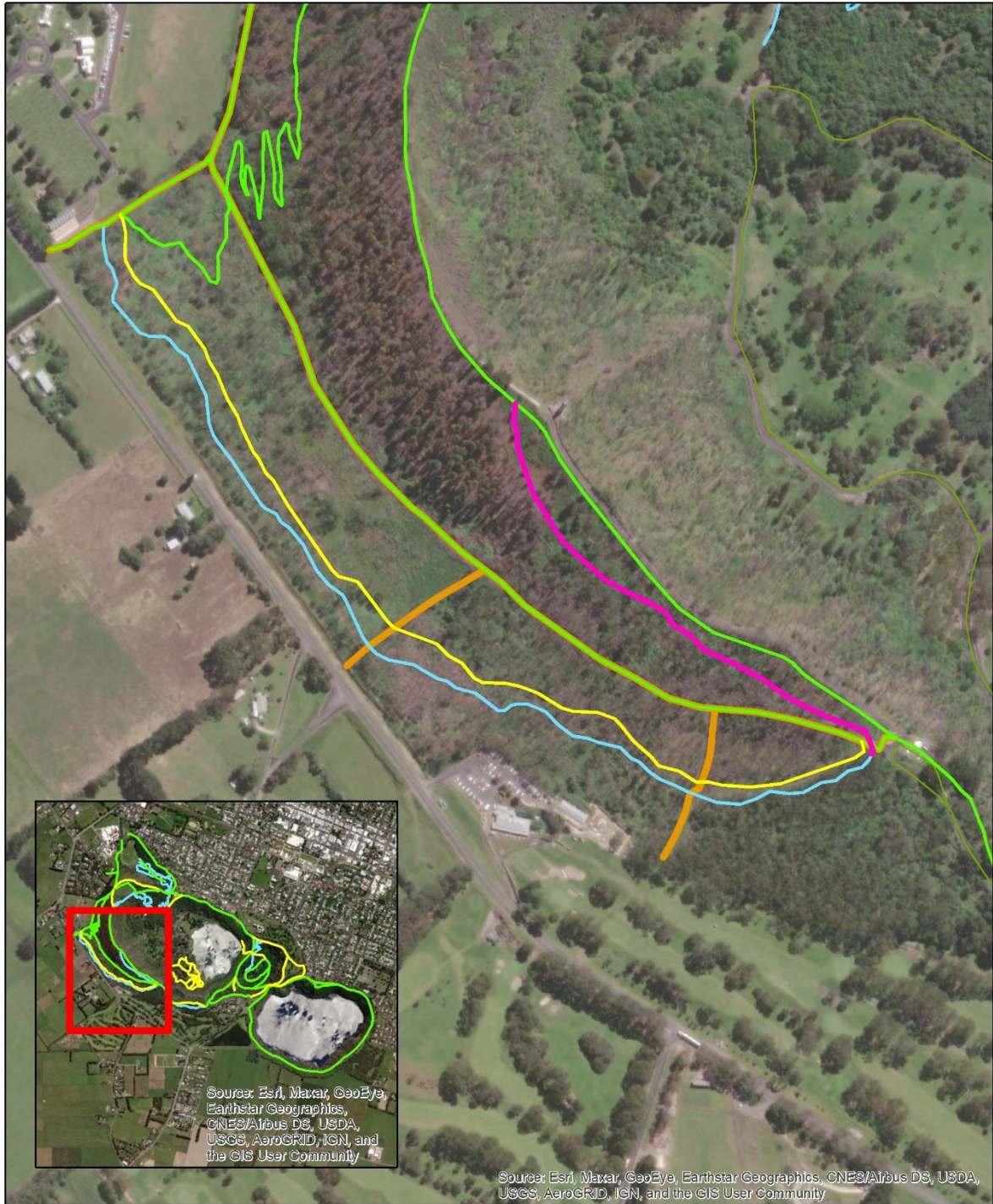
0 70 140 280 Meters



City of
Mount Gambier

Full Wam

Trail Name	Full Wam
Land Tenure	Crater Lakes Trail Network, City of Mt Gambier
Trail Category	Downhill Trail (cycling only)
Trail Classification	MTBA: TBC
Trail Description	Natural surface singletrail.
Trail Length	550m
Trail Signage	To be installed. Update inventory on completion.
Trail Structures	nil
Trail Surrounds	Open woodland
Stakeholders & users	Popular for cycling, trail running and walking.
Est. Capital Value	\$13,750
Current IPWEA score	4 – Trail currently closed due to previous fire and access to area being restricted.
Works required	Fallen trees to remove. Trail is currently overgrown with regrowth and requires clearing. Re-shape trail to original condition. Junction at trailhead to be re-designed (potential use of temporary barriers) with safety of all users considered.



Legend

- Walking_Trails_Combined
- Shared_Trails_Combined
- Cycling_Trails_Combined
- Management_Vehicle_Access_Track

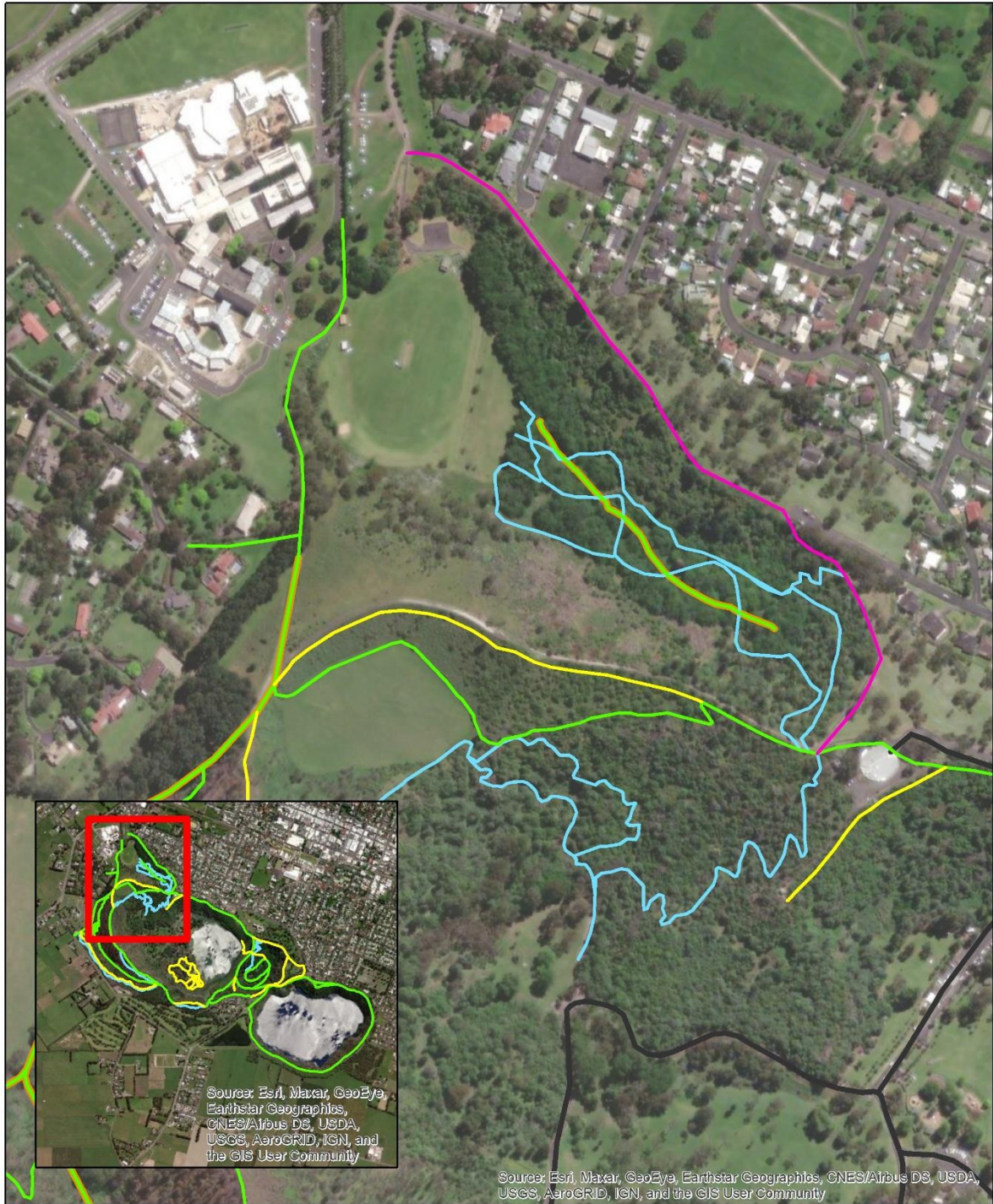
Crater Lakes Trails Full Wam

0 70 140 280 Meters



Grassy Hill Trail

Trail Name	Grassy Hill Trail
Land Tenure	Crater Lakes Trail Network, City of Mt Gambier
Trail Category	Shared-Use (Walking, running, cycling)
Trail Classification	MTBA: Easy with intermediate AS2156: Grade 3
Trail Description	Dual direction trail with a mix of natural surface, grass and compacted rubble surfaces. Accessible by vehicle for management purposes.
Trail Length	860m
Trail Signage	To be installed. Update inventory on completion.
Trail Structures	nil
Trail Surrounds	Open grassy area..
Stakeholders & users	Popular for walking, cycling, and trail running.
Est. Capital Value	\$20,000
Current IPWEA score	2
Works required	Clear drainage to ensure water sheds off trail.



Legend

- Grassy_Hill_Trail
- Walking_Trails_Combined
- Shared_Trails_Combined
- Cycling_Trails_Combined
- Management_Vehicle_Access_Track

Crater Lakes Trails Grassy Hill Trail

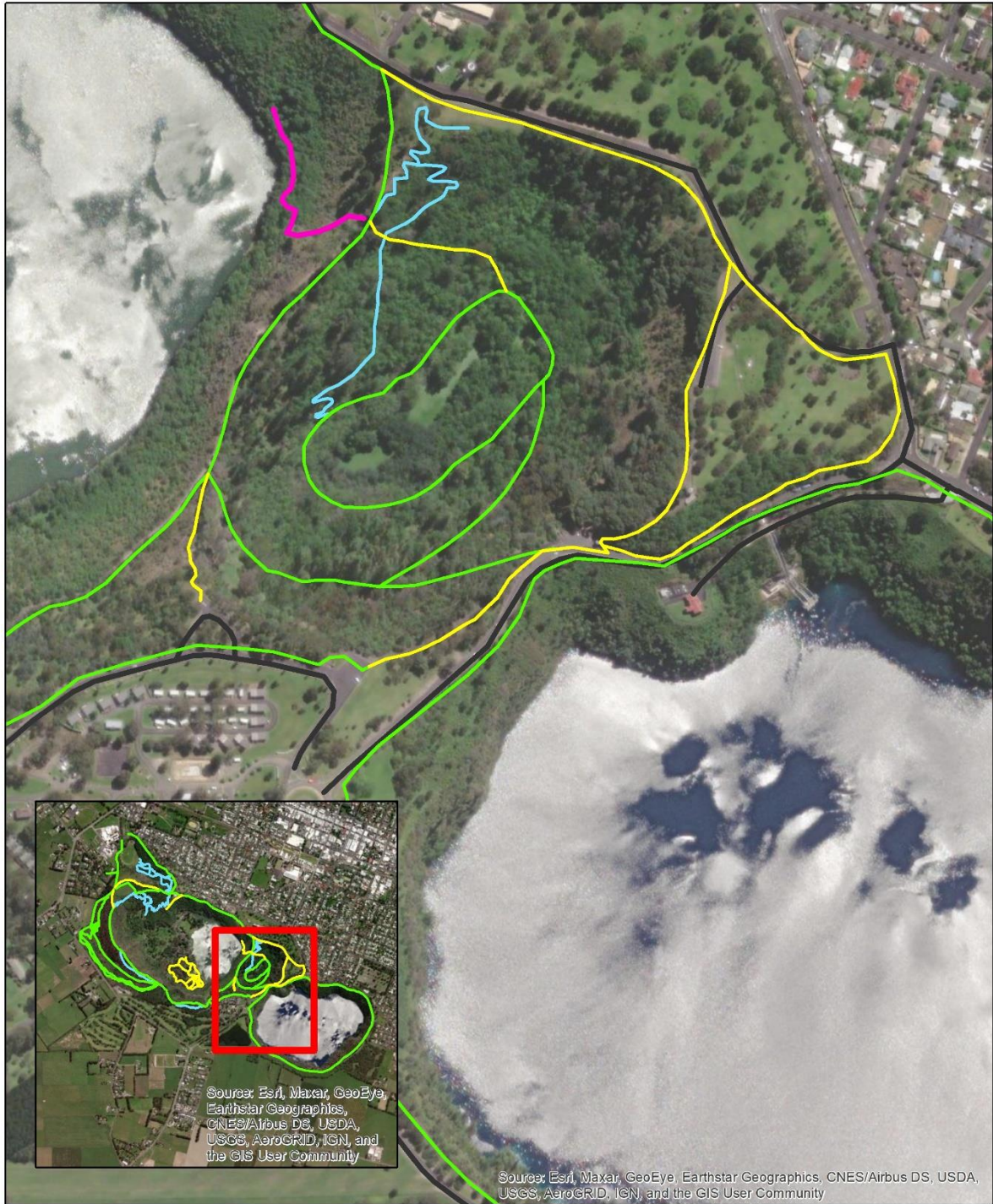
0 70 140 280 Meters



Hike A

Trail Name	Hike A
Land Tenure	Crater Lakes Trail Network, City of Mt Gambier
Trail Category	Hiking trail, dual direction
Trail Classification	AS2156: Grade 4
Trail Description	Steep natural surface single trail.
Trail Length	230m
Trail Signage	To be installed. Update inventory on completion.
Trail Structures	nil
Trail Surrounds	Steep sideslope of western edge of Valley Lake/Ketia Malpi
Stakeholders & users	Popular for locals accessing western edge of lake for rope swings and fishing.
Est. Capital Value	\$5,750
Current IPWEA score	3
Works required	Improve drainage in key locations to divert water off trail.

- Need to determine if trail is to be promoted and sign posted in the future.



Legend

- Walking_Trails_Combined
- Shared_Trails_Combined
- Cycling_Trails_Combined
- Management_Vehicle_Access_Track

Crater Lakes Trails Hike A

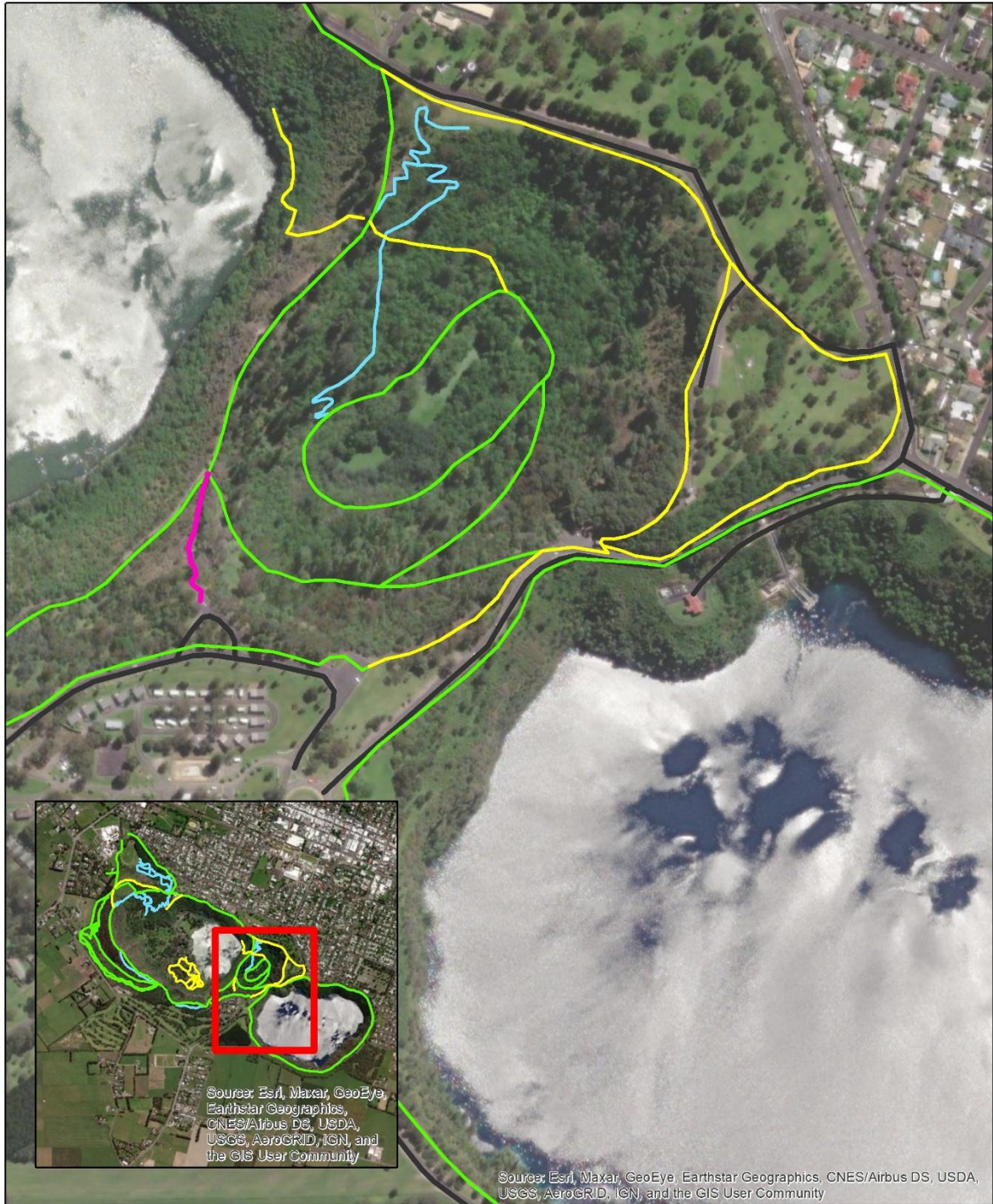
0 70 140 280 Meters



Hike B

Trail Name	Hike B
Land Tenure	Crater Lakes Trail Network, City of Mt Gambier
Trail Category	Hiking trail, dual direction
Trail Classification	AS2156: Grade 4
Trail Description	Steep natural surface single trail.
Trail Length	230m
Trail Signage	To be installed. Update inventory on completion.
Trail Structures	nil
Trail Surrounds	On ridge with steep side slopes.
Stakeholders & users	Popular for locals as short cut between carpark and the saddle between Valley Lake/Ketla Malpi and Leg of Mutton/Yatton Loo.
Est. Capital Value	\$5,750
Current IPWEA score	2
Works required	Improve drainage in key locations to divert water off trail.

- Need to determine if trail is to be promoted and sign posted in the future.



Legend

- Walking_Trails_Combined
- Shared_Trails_Combined
- Cycling_Trails_Combined
- Management_Vehicle_Access_Track

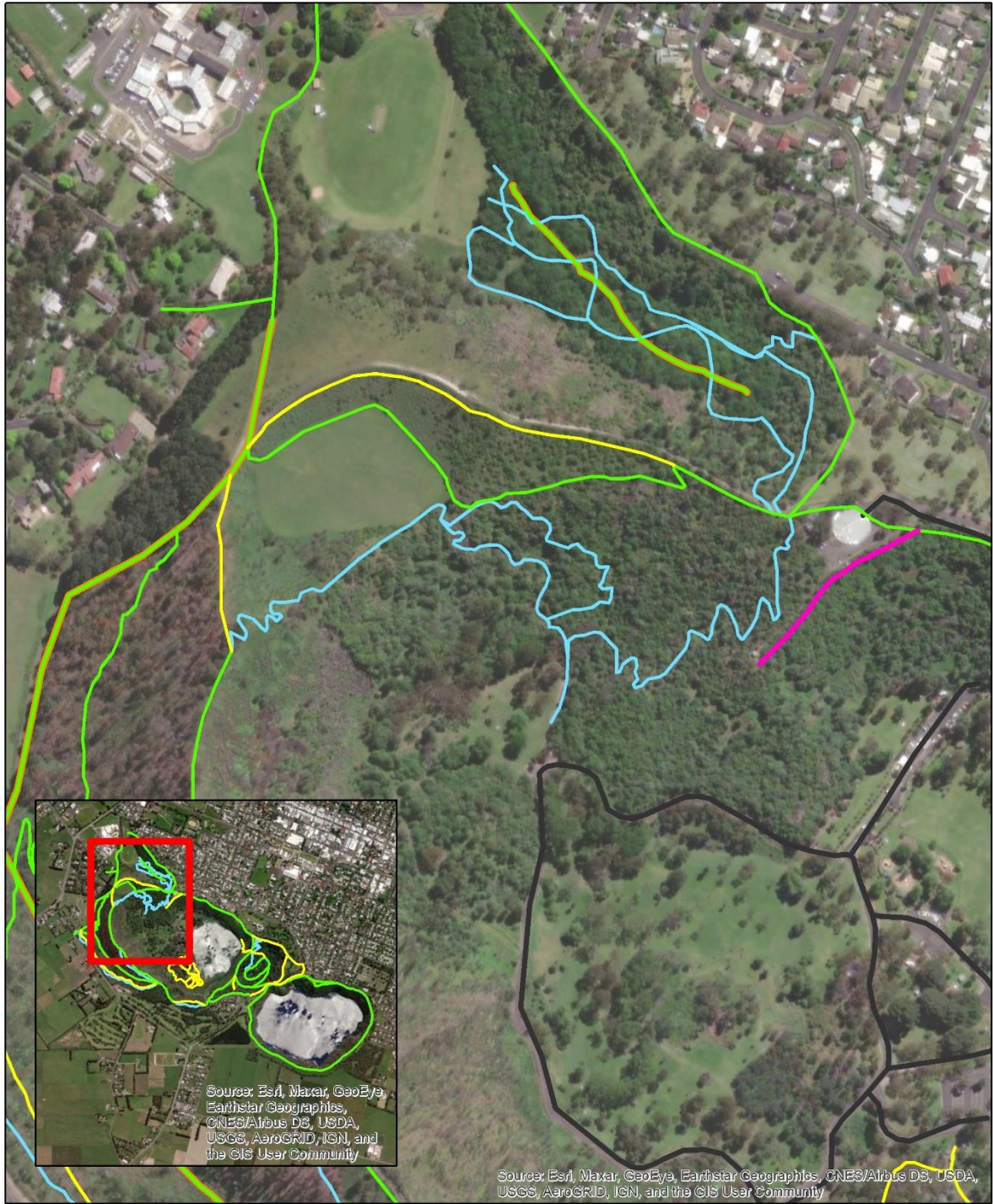
Crater Lakes Trails Hike B

0 70 140 280 Meters



Hike C

Trail Name	Hike C
Land Tenure	Crater Lakes Trail Network, City of Mt Gambier
Trail Category	Hiking trail, dual direction
Trail Classification	AS2156: Grade 4
Trail Description	A short timber stepped trail between Potters Point Lookout and old Viewpoint shelter.
Trail Length	217m
Trail Signage	To be installed. Update inventory on completion.
Trail Structures	Multiple timber steps. Historic shelter.
Trail Surrounds	Heavily vegetated hill sides.
Stakeholders & users	Popular for tourists, walkers, and trail running.
Est. Capital Value	\$260,000
Current IPWEA score	2
Works required	Monitor condition of steps and replace as required.



Legend

- Walking_Trails_Combined
- Shared_Trails_Combined
- Cycling_Trails_Combined
- Management_Vehicle_Access_Track

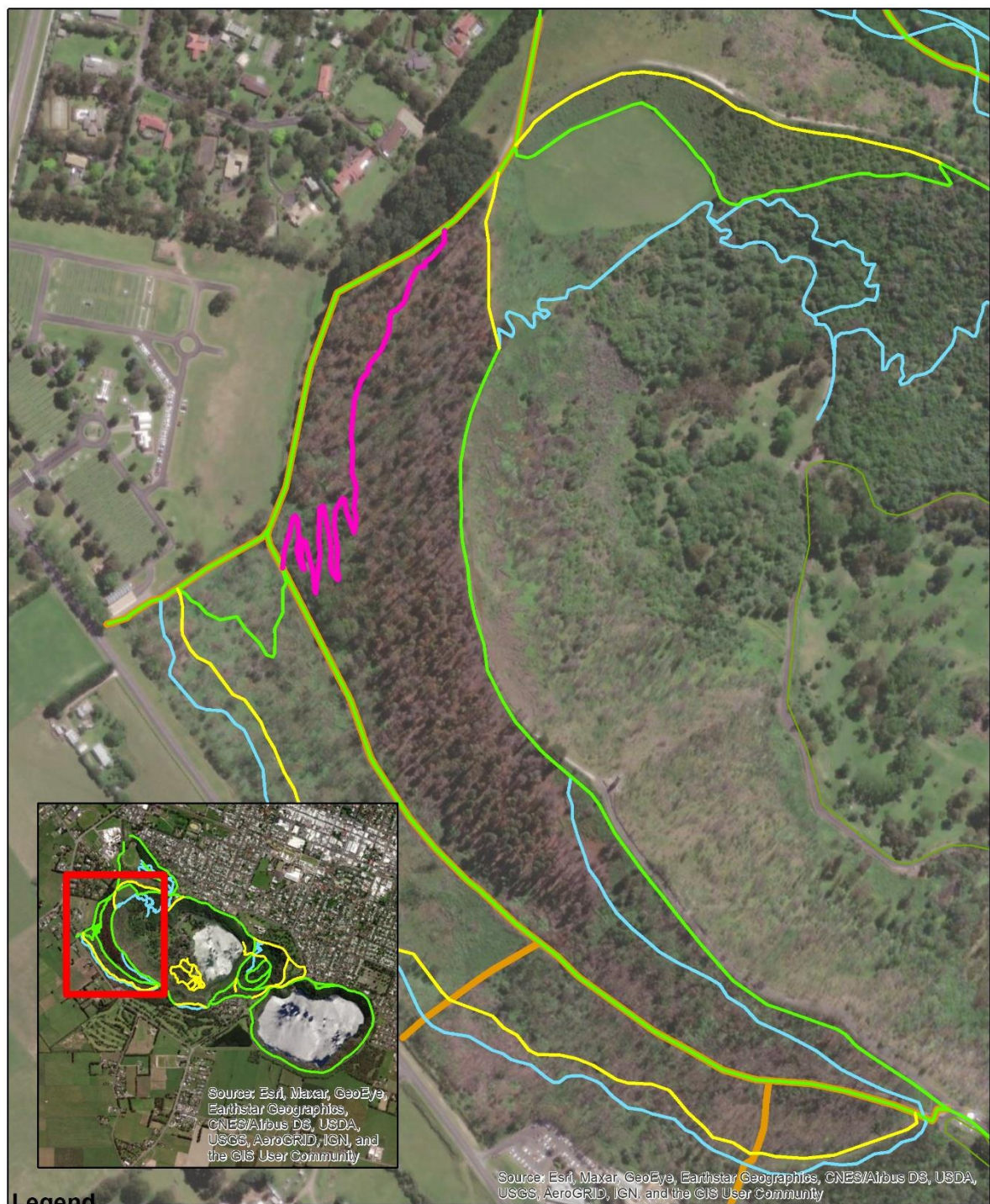
Crater Lakes Trails Hike C Walking Trail

0 70 140 280 Meters



JJ Trail

Trail Name	JJ Trail
Land Tenure	Crater Lakes Trail Network, City of Mt Gambier
Trail Category	Shared-Use (Walking, running, cycling)
Trail Classification	MTBA: Intermediate AS2156: Grade 4
Trail Description	Natural surface singletrail. Mostly used as a climbing trail as an alternative to steep fire track nearby.
Trail Length	860m
Trail Signage	To be installed. Update inventory on completion.
Trail Structures	nil
Trail Surrounds	Pine plantation on slope.
Stakeholders & users	Popular for cycling, trail running.
Est. Capital Value	\$21,500
Current IPWEA score	4 – Trail currently closed due to previous fire and access to area being restricted.
Works required	Fallen trees to remove. Trail is currently overgrown with regrowth and requires clearing. Re-shape trail to original condition.



Legend

- JJ_Trail
- Walking_Trails_Combined
- Shared_Trails_Combined
- Cycling_Trails_Combined
- Management_Vehicle_Access_Track

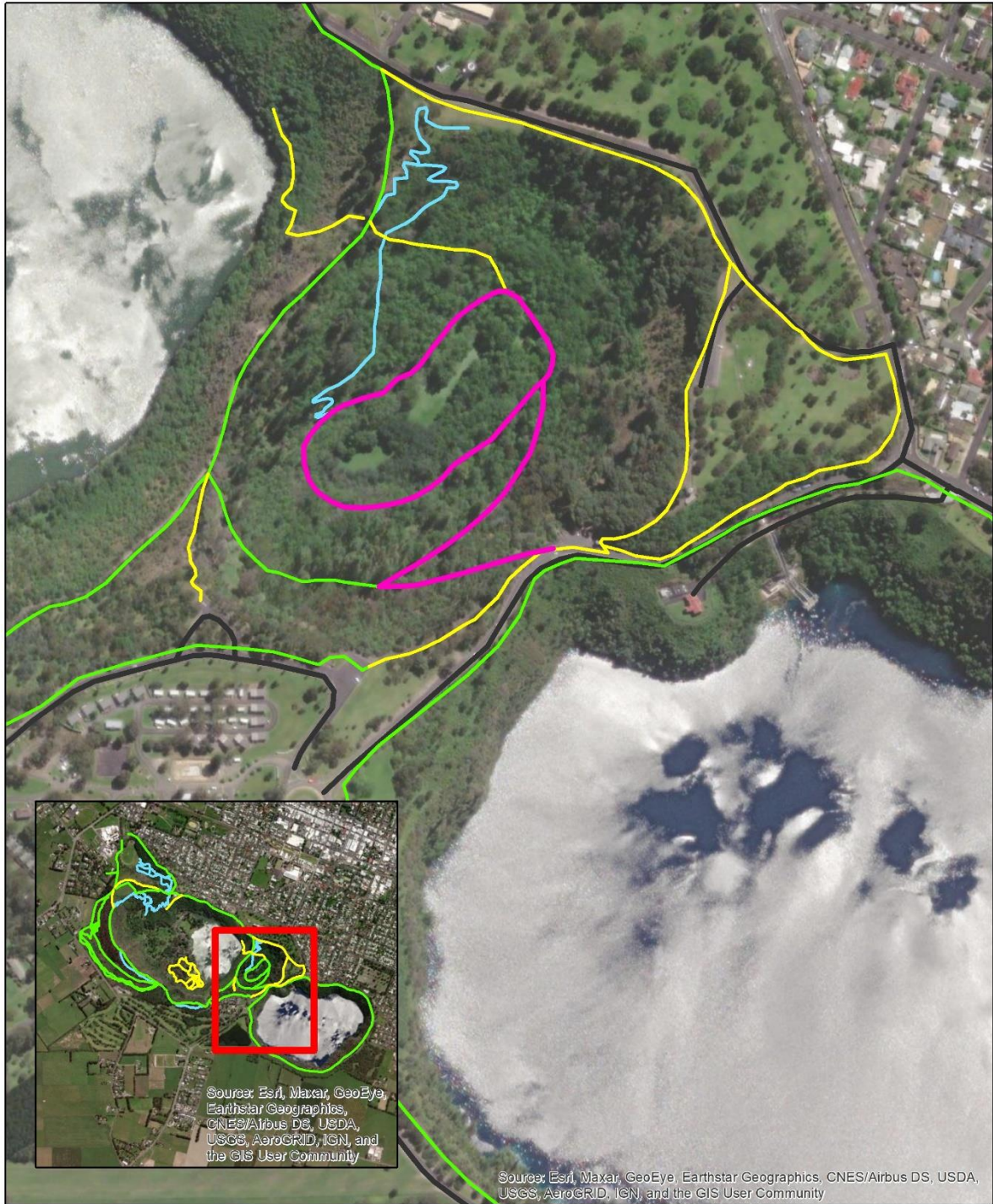
Crater Lakes Trails JJ Shared-Use Trail

0 70 140 280 Meters



Leg of Mutton/Yatton Loo Lake Trail

Trail Name	Leg of Mutton/Yatton Loo Trail
Land Tenure	Crater Lakes Trail Network, City of Mt Gambier
Trail Category	Shared-Use (Walking, running, cycling)
Trail Classification	MTBA: Easy with intermediate AS2156: Grade 3
Trail Description	Dual direction trail with a mix of natural surface, asphalt and compacted rubble surfaces. Accessible by vehicle for management purposes.
Trail Length	1200m
Trail Signage	To be installed. Update inventory on completion.
Trail Structures	nil
Trail Surrounds	Heavy vegetation of the Leg of Mutton/Yatton Loo crater.
Stakeholders & users	Popular for tourists, walking, cycling, and trail running.
Est. Capital Value	\$150,000
Current IPWEA score	2
Works required	Manage encroaching vegetation, branches and shrubs. Clear drainage to ensure water sheds off trail. Potential to re-sheet trail with compacted rubble.



Legend

- Walking_Trails_Combined
- Shared_Trails_Combined
- Cycling_Trails_Combined
- Management_Vehicle_Access_Track

Crater Lakes Trails Leg of Mutton Shared-Use Trail

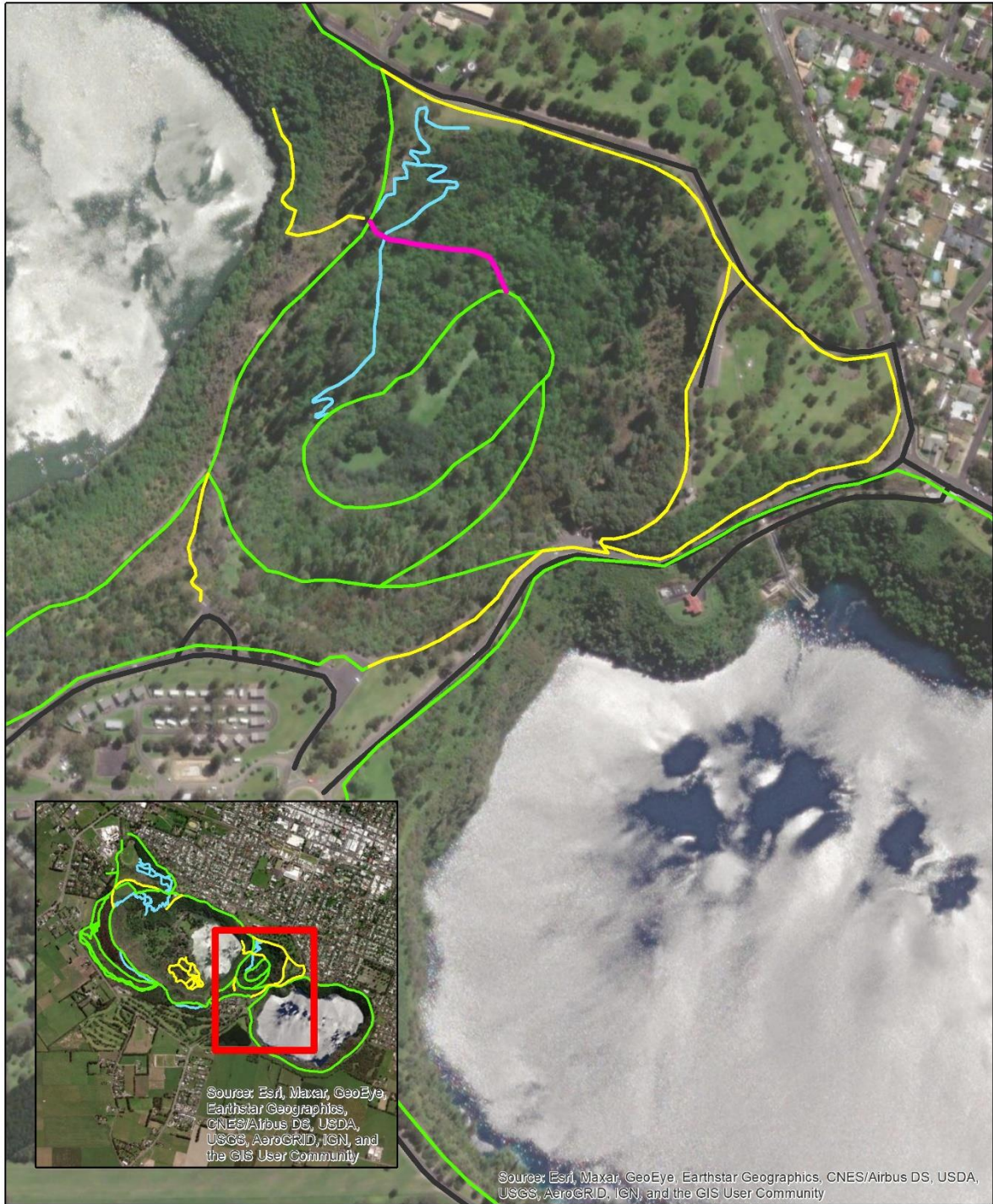
0 70 140 280 Meters



City of
Mount Gambier

Leg of Mutton/Yatton Loo Link Trail

Trail Name	Leg of Mutton/Yatton Loo Link Trail
Land Tenure	Crater Lakes Trail Network, City of Mt Gambier
Trail Category	Walking Only
Trail Classification	AS2156: Grade 3
Trail Description	Dual direction natural surface single trail with some timber steps.
Trail Length	175m
Trail Signage	To be installed. Update inventory on completion.
Trail Structures	Some timber steps,
Trail Surrounds	Heavy vegetation of the Leg of Mutton/Yatton Loo crater.
Stakeholders & users	Walkers link between Saddle and Leg of Mutton/Yatton Loo crater.
Est. Capital Value	\$4375
Current IPWEA score	2
Works required	Manage encroaching vegetation, branches and shrubs. Clear drainage to ensure water sheds off trail. Monitor condition of steps.



Legend

- Walking_Trails_Combined
- Shared_Trails_Combined
- Cycling_Trails_Combined
- Management_Vehicle_Access_Track

Crater Lakes Trails Leg of Mutton Link Trail

0 70 140 280 Meters

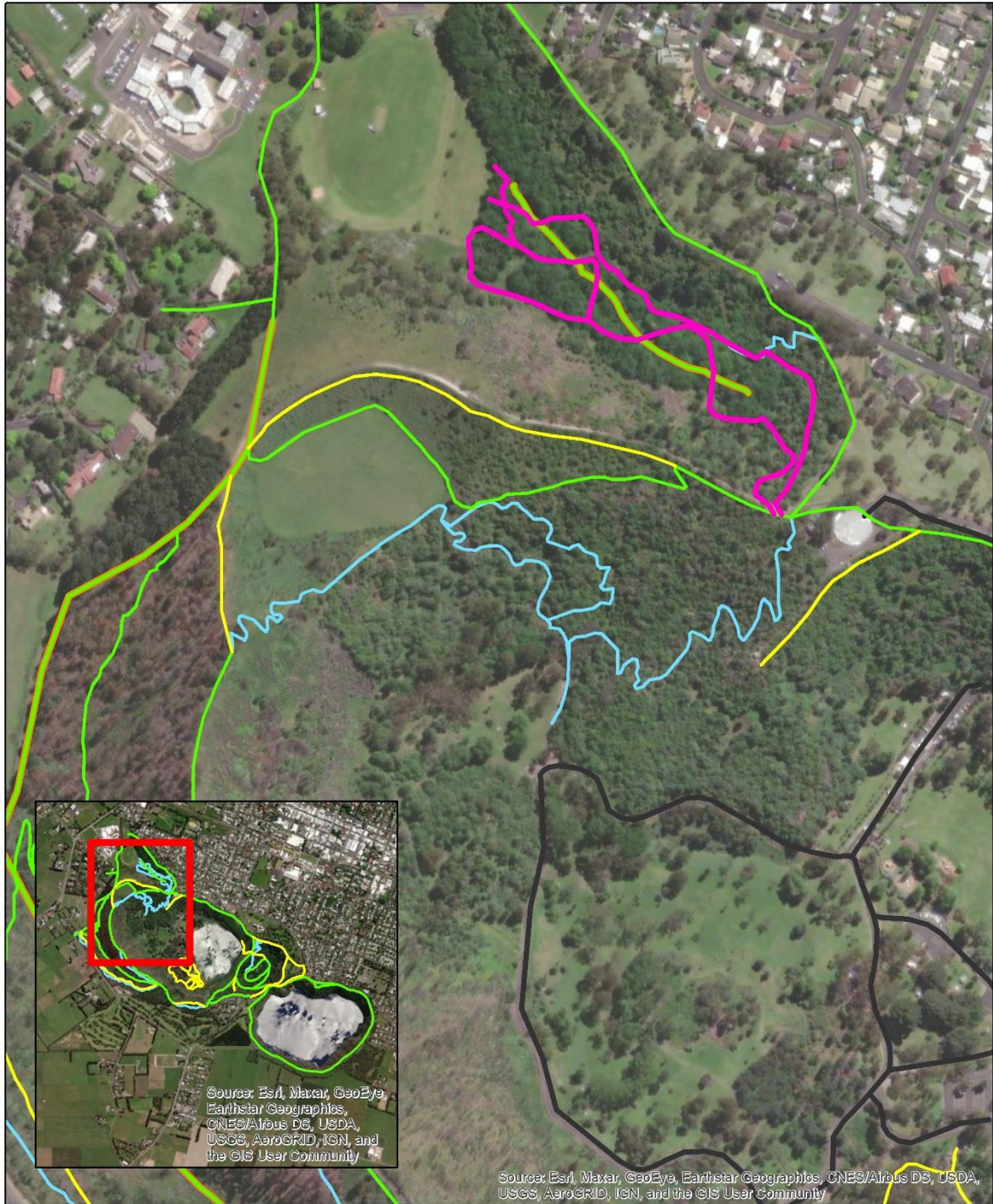


Lower MTB Trail

To Close

Marist Park Downhill Trails

Trail Name	Marist Park Downhill Trails
Land Tenure	Crater Lakes Trail Network, City of Mt Gambier
Trail Category	Mountain Bike Only Trail
Trail Classification	MTBA: Difficult with Extreme Jumps
Trail Description	Natural surface downhill trail with multiple lines to choose from. A range of double jumps with B lines.
Trail Length	1200m
Trail Signage	To be installed. Update inventory on completion.
Trail Structures	Double jumps
Trail Surrounds	Abundant trees - mostly introduced.
Stakeholders & users	Popular for mountain bike riding.
Est. Capital Value	\$30,000
Current IPWEA score	3
Works required	Manage encroaching vegetation, branches and shrubs. Clear drainage to ensure water sheds off trail. Monitor condition of jumps.



Legend

- Walking_Trails_Combined
- Shared_Trails_Combined
- Cycling_Trails_Combined
- Management_Vehicle_Access_Track

Crater Lakes Trails Marist Park Downhill Trails

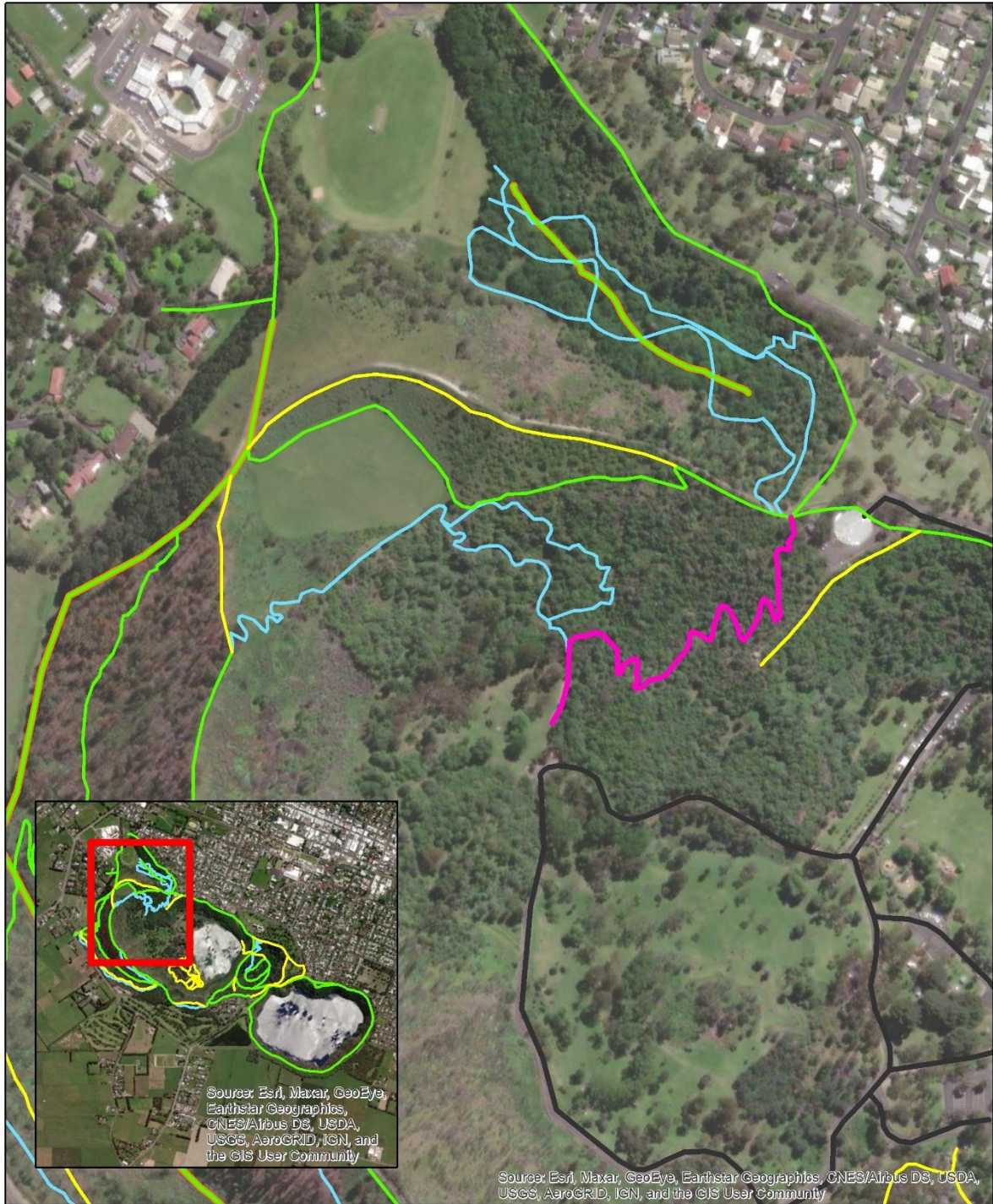
0 70 140 280 Meters



City of
Mount Gambier

Mazdos Masterpiece

Trail Name	Mazdos Masterpiece
Land Tenure	Crater Lakes Trail Network, City of Mt Gambier
Trail Category	Mountain Bike Only Trail
Trail Classification	MTBA: Difficult with Extreme features
Trail Description	Natural surface downhill trail with optional larger drops and jump features.
Trail Length	620m
Trail Signage	To be installed. Update inventory on completion.
Trail Structures	Drops, double jumps
Trail Surrounds	Abundant trees - mostly introduced.
Stakeholders & users	Popular for mountain bike riding.
Est. Capital Value	\$18,600
Current IPWEA score	3
Works required	Manage encroaching vegetation, branches and shrubs. Clear drainage to ensure water sheds off trail. Improve drops and jumps. Establish clear A, B and C line sections.



Legend

- Walking_Trails_Combined
- Shared_Trails_Combined
- Cycling_Trails_Combined
- Management_Vehicle_Access_Track

Crater Lakes Trails Mazdos Downhill Trail

0 70 140 280 Meters



Mountain Trail

Trail Name	Mountain Trail
Land Tenure	Crater Lakes Trail Network, City of Mt Gambier
Trail Category	Dual direction Walking trail with some sections open to cycling.
Trail Classification	MTBA: Intermediate AS2156: Grade 4
Trail Description	Dual direction. Mix of concrete path, asphalt path, wide compacted rubble and extended sections of timber steps.
Trail Length	4400m
Trail Signage	To be installed. Update inventory on completion.
Trail Structures	Some associated park bench furniture
Trail Surrounds	Variety of landscapes from manicured gardens, open exposed ridges and paths adjacent roads.
Stakeholders & users	Longer loop walk for tourists and community.
Est. Capital Value	\$350,000
Current IPWEA score	3 - The condition of the trail varies due to a range of surface types and gradients. The saddle has several exposed tree roots.
Works required	Manage encroaching vegetation, branches and shrubs. Clear drainage to ensure water sheds off trail. Consider sealing other steep eroding sections with asphalt or concrete. Monitor condition of steps.

Mountain Trail Alternate Section

An alternative section uses the existing vehicle management tracks and is intended to avoid the steep timber stepped section north of Centenary Tower.



Legend

- Walking_Trails_Combined
- Shared_Trails_Combined
- Cycling_Trails_Combined
- Management_Vehicle_Access_Track

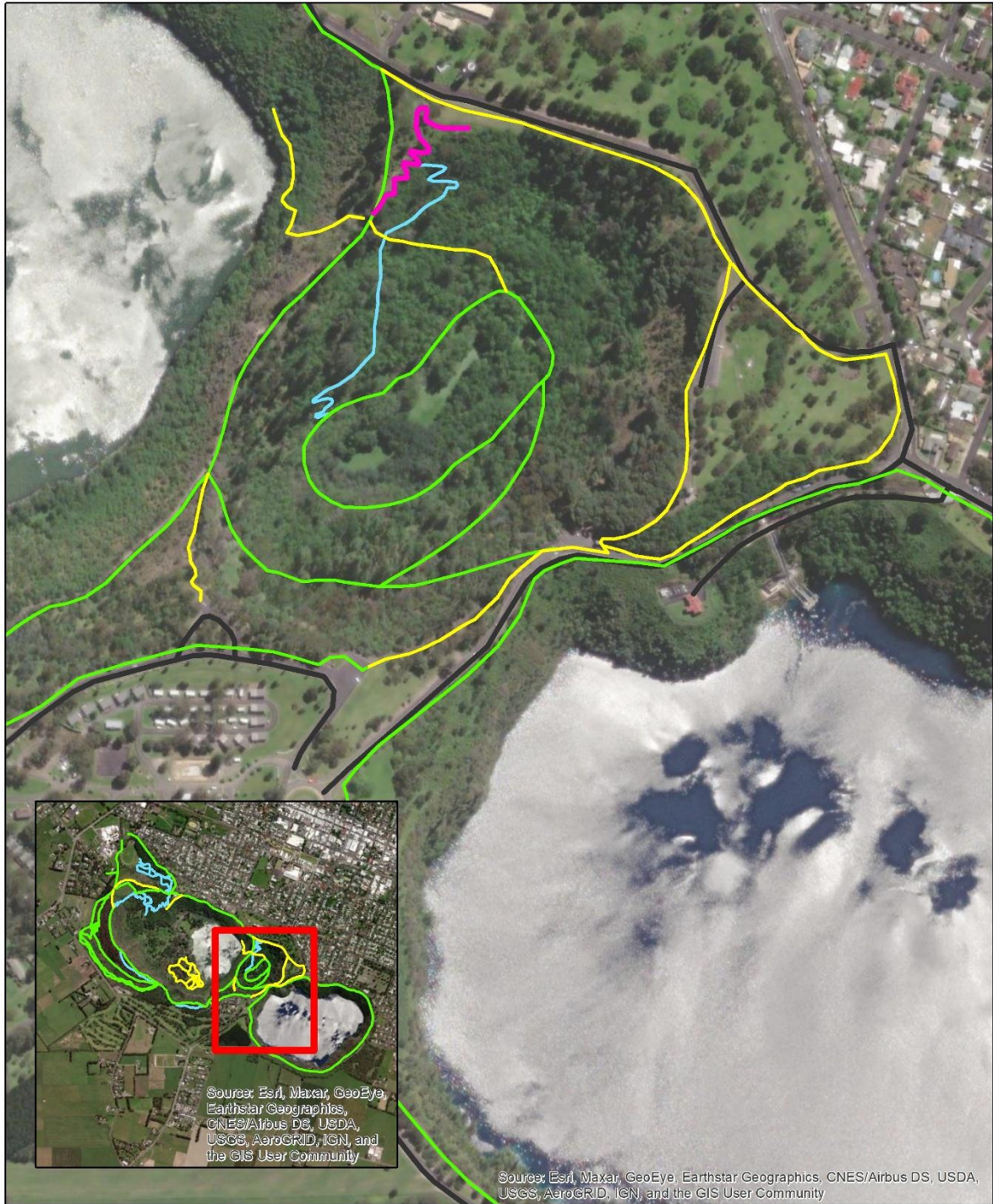
Crater Lakes Trails Mountain Trail Hike

0 140 280 560 Meters



Nurses Curses

Trail Name	Nurses Curses
Land Tenure	Crater Lakes Trail Network, City of Mt Gambier
Trail Category	Mountain Bike Only Trail
Trail Classification	MTBA: Intermediate
Trail Description	Natural surface downhill trail with bermed corners.
Trail Length	240m
Trail Signage	To be installed. Update inventory on completion.
Trail Structures	Berms
Trail Surrounds	Open area on ridge.
Stakeholders & users	Popular for mountain bike riding.
Est. Capital Value	\$7,200
Current IPWEA score	2
Works required	Manage encroaching vegetation, branches and shrubs. Clear drainage to ensure water sheds off trail. Block shortcuts to slow riders.



Legend

- Walking_Trails_Combined
- Shared_Trails_Combined
- Cycling_Trails_Combined
- Management_Vehicle_Access_Track

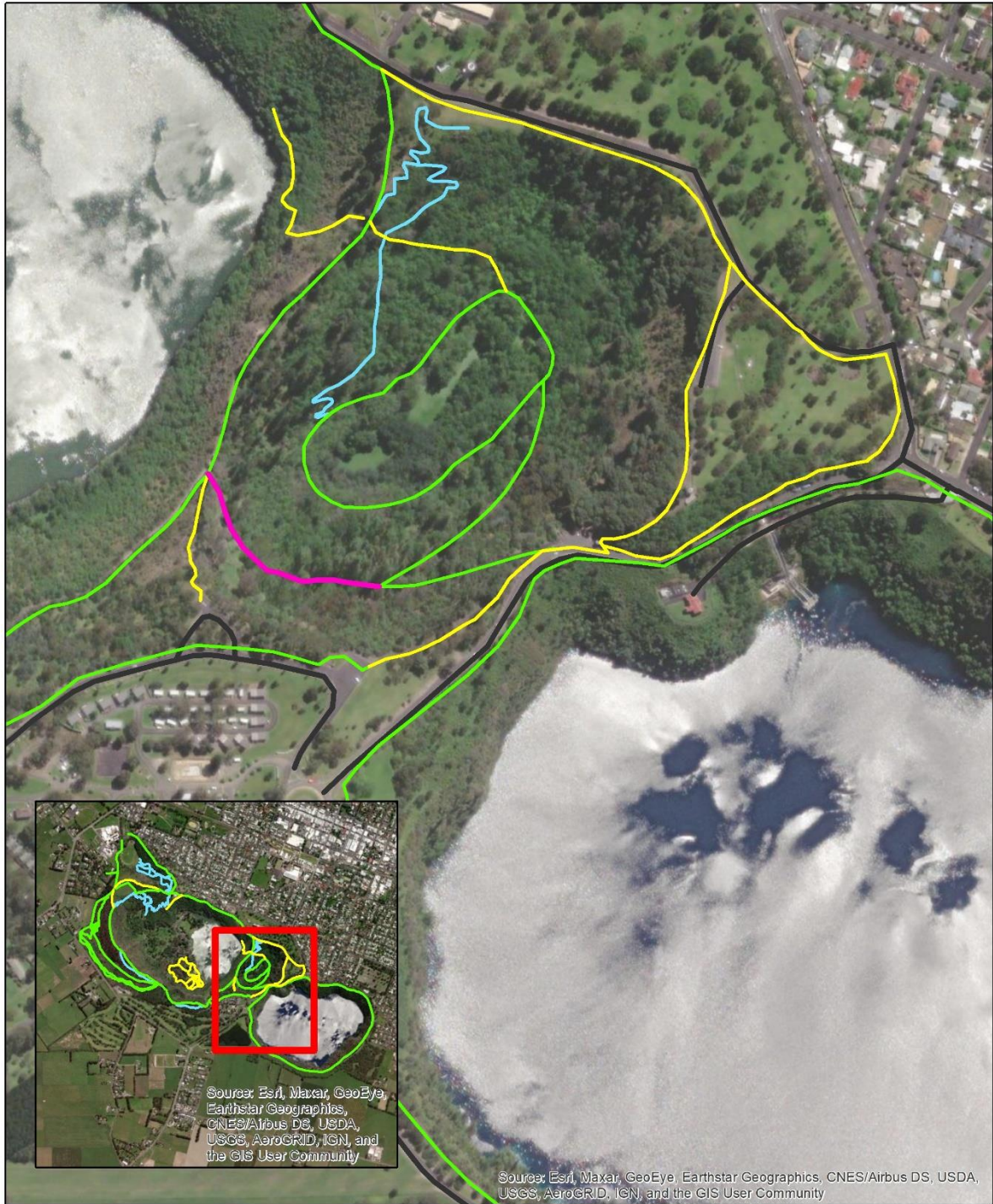
Crater Lakes Trails Nurses Curses

0 70 140 280 Meters



Outa Mutton

Trail Name	Outa Mutton
Land Tenure	Crater Lakes Trail Network, City of Mt Gambier
Trail Category	Dual Direction Shared-Use (Walking, running, cycling)
Trail Classification	MTBA: Intermediate AS2156: Grade 3
Trail Description	Natural surface singletrail along contour.
Trail Length	240m
Trail Signage	To be installed. Update inventory on completion.
Trail Structures	nil
Trail Surrounds	Heavy wooded area on side slope.
Stakeholders & users	Popular as a link between Saddle and Leg of Mutton/Yatton Loo
Est. Capital Value	\$7,200
Current IPWEA score	2
Works required	Manage encroaching vegetation, branches and shrubs. Clear drainage to ensure water sheds off trail. Widen trail in narrow sections.



Legend

- Walking_Trails_Combined
- Shared_Trails_Combined
- Cycling_Trails_Combined
- Management_Vehicle_Access_Track

Crater Lakes Trails Outa Mutton Shared-Use Trail

0 70 140 280 Meters



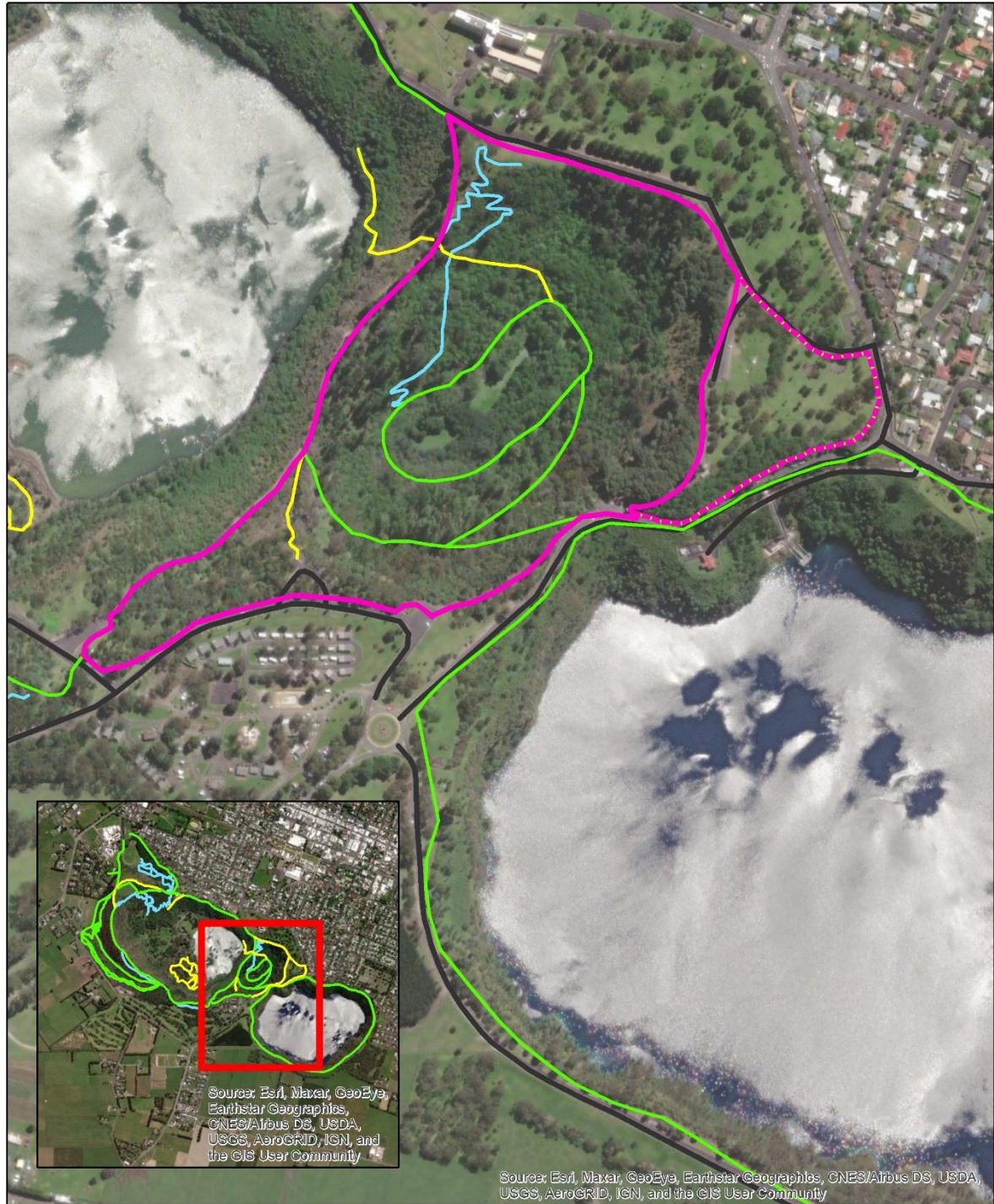
City of
Mount Gambier

Pepper Pot Rook Walk

Trail Name	Pepper Pot Rook Walk
Land Tenure	Crater Lakes Trail Network, City of Mt Gambier
Trail Category	Dual direction Walking trail
Trail Classification	AS2156: Grade 3
Trail Description	Dual direction. Mix of concrete path, wide compacted rubble and extended sections of timber steps.
Trail Length	2400m
Trail Signage	To be installed. Update inventory on completion.
Trail Structures	Some associated park bench furniture
Trail Surrounds	Variety of landscapes from manicured gardens, open exposed ridges and paths adjacent roads.
Stakeholders & users	A Loop walk for tourists and community.
Est. Capital Value	\$190,000
Current IPWEA score	3 - The condition of the trail varies due to a range of surface types and gradients. The saddle has several exposed tree roots.
Works required	Clear drainage to ensure water sheds off trail. Monitor condition of steps and replace those that are failing. Consider replacement of steps with FRP mesh. Consider replacing surface where heavily eroded in key areas.

Pepper Pot Rook Walk Alternative

The alternative route is intended to avoid extended lengths of steps however users are left to negotiate across the grass to meet the original trail. No trail or signs provided.



Legend

- Walking_Trails_Combined
- Shared_Trails_Combined
- Cycling_Trails_Combined
- Management_Vehicle_Access_Track

Crater Lakes Trails Pepper Pot - Rook Walk

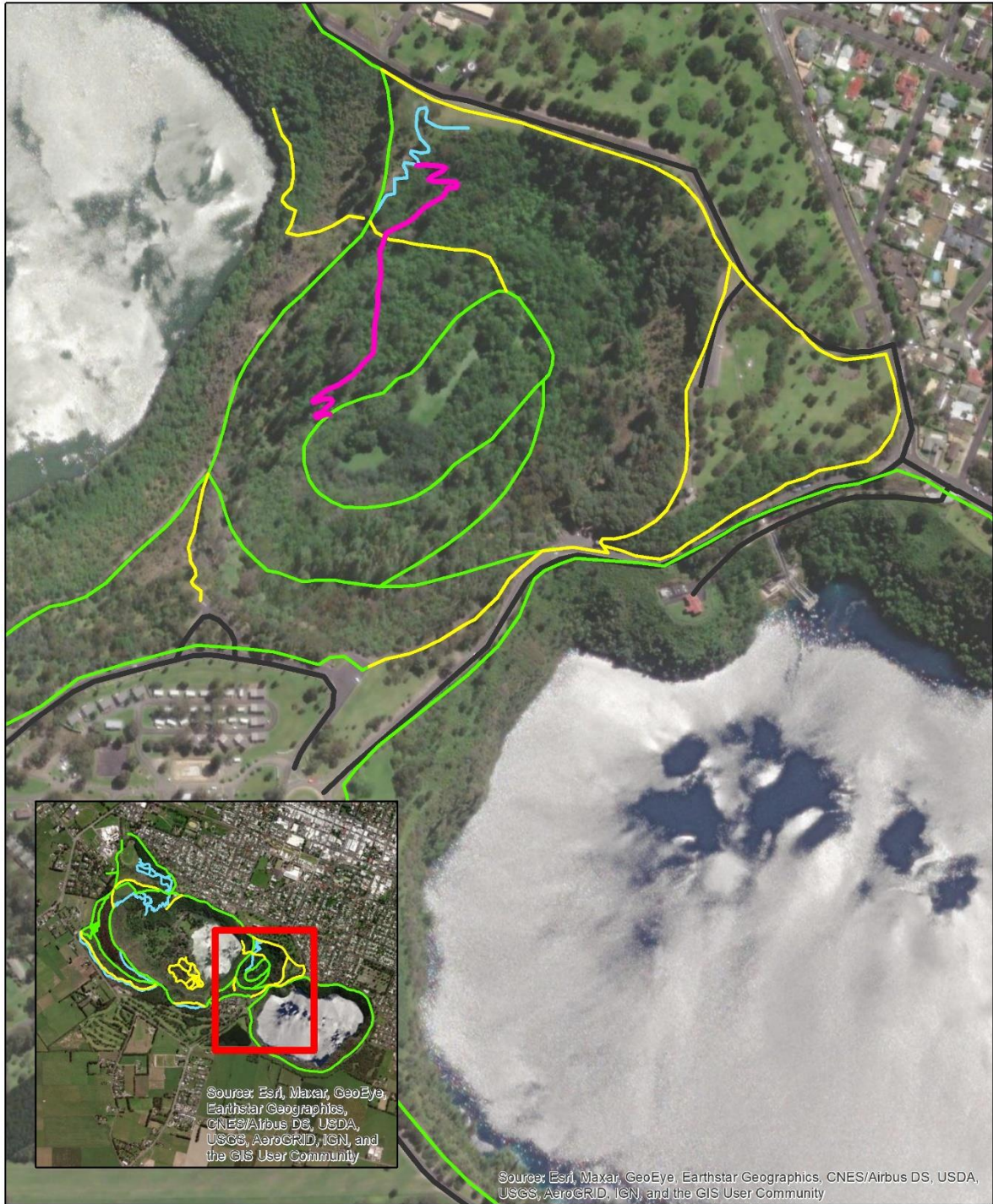
0 85 170 340 Meters



City of
Mount Gambier

Right Leg Down

Trail Name	Right Leg Down
Land Tenure	Crater Lakes Trail Network, City of Mt Gambier
Trail Category	Mountain Bike Only Trail
Trail Classification	MTBA: difficult
Trail Description	Natural surface downhill trail with drops and off camber sections.
Trail Length	450m
Trail Signage	To be installed. Update inventory on completion.
Trail Structures	Drops, chicane (to be built)
Trail Surrounds	Heavy wooded area on side slope.
Stakeholders & users	Popular for mountain bike riding.
Est. Capital Value	\$11,250
Current IPWEA score	2
Works required	<p>Manage encroaching vegetation, branches and shrubs.</p> <p>Clear drainage to ensure water sheds off trail.</p> <p>Create a chicane at intersection with walking trail.</p> <p>Close original end to trail.</p>



Legend

- Walking_Trails_Combined
- Shared_Trails_Combined
- Cycling_Trails_Combined
- Management_Vehicle_Access_Track

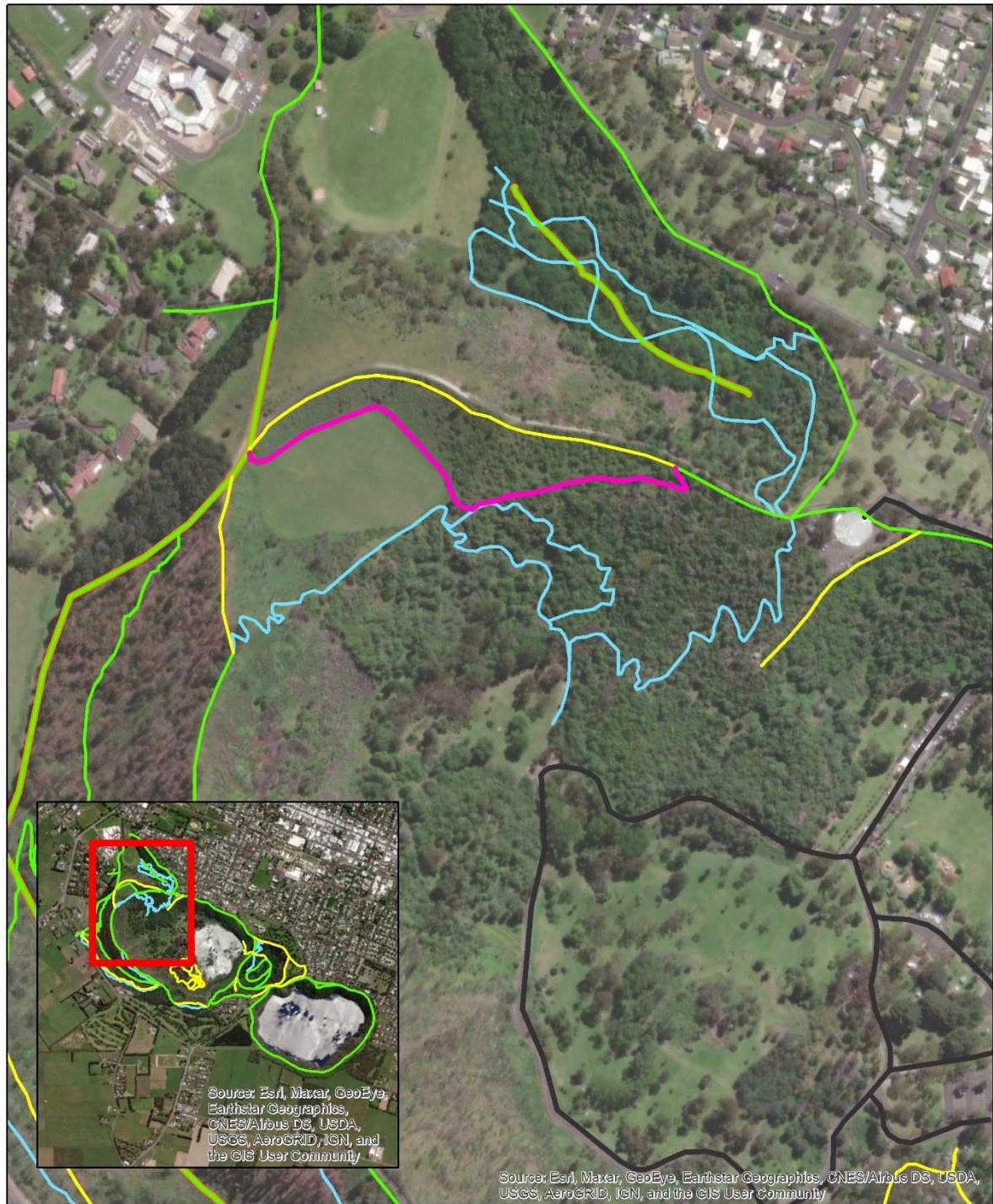
Crater Lakes Trails Right Leg Down

0 70 140 280 Meters



Tombstones

Trail Name	Tombstones
Land Tenure	Crater Lakes Trail Network, City of Mt Gambier
Trail Category	Shared-Use (Walking, running, cycling) (cycling uphill only)
Trail Classification	MTBA: Intermediate AS2156: Grade 3
Trail Description	Natural surface singletrail along contour.
Trail Length	550m
Trail Signage	To be installed. Update inventory on completion.
Trail Structures	nil
Trail Surrounds	Heavy wooded area on side slope.
Stakeholders & users	Popular as a link between Potters Point and western grassed area. Avoids steep crater rim section.
Est. Capital Value	\$16,500
Current IPWEA score	2
Works required	Manage encroaching vegetation, branches and shrubs. Clear drainage to ensure water sheds off trail. Widen trail in narrow sections.



Legend

- Walking_Trails_Combined
- Shared_Trails_Combined
- Cycling_Trails_Combined
- Management_Vehicle_Access_Track

Crater Lakes Trails Tombstones Shared-Use Trail

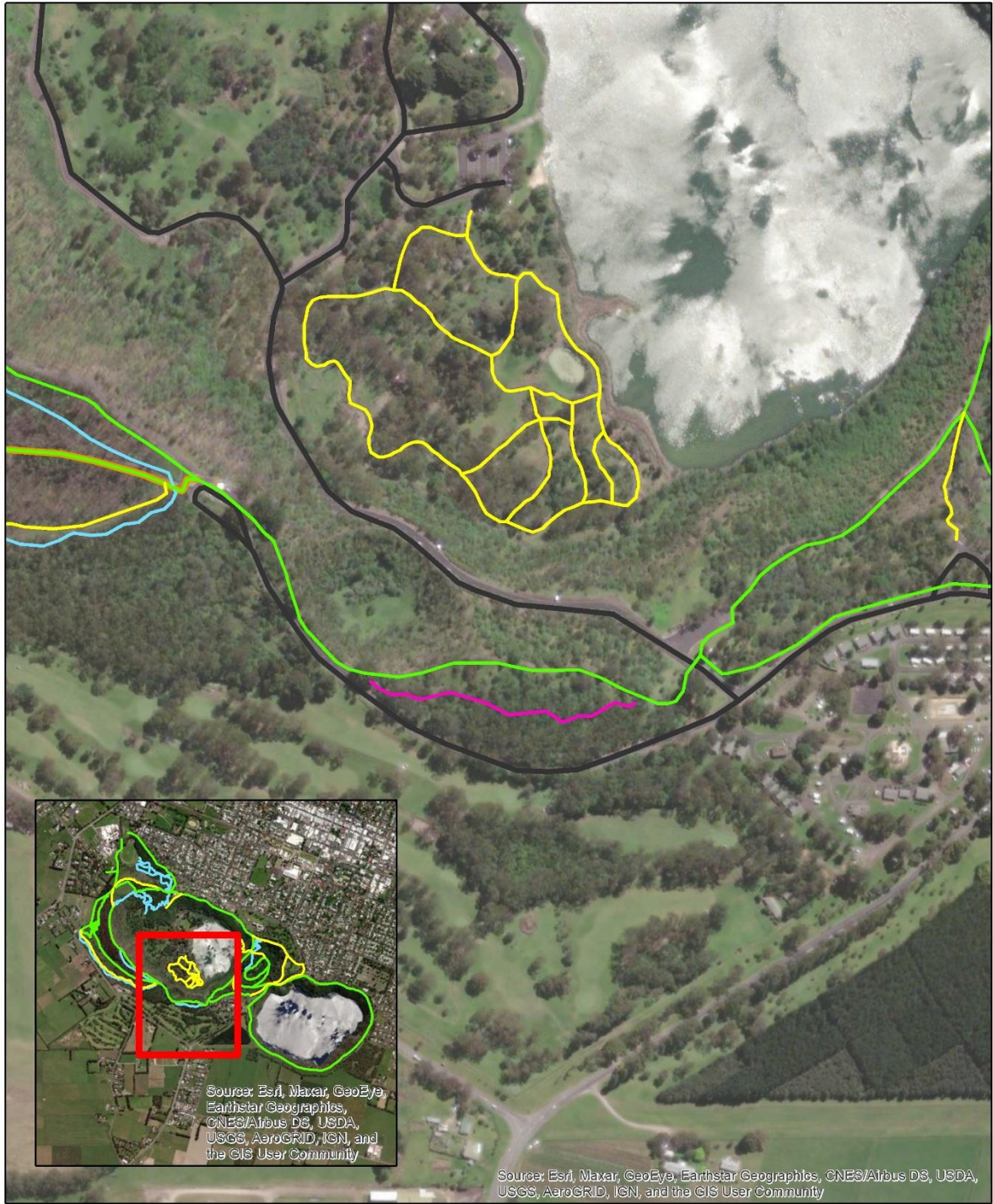
0 70 140 280 Meters



City of
Mount Gambier

Tower Up

Trail Name	Tower Up
Land Tenure	Crater Lakes Trail Network, City of Mt Gambier
Trail Category	Cycling only
Trail Classification	MTBA: Easy with intermediate sections
Trail Description	Natural surface singletrail. Dual Direction.
Trail Length	290m
Trail Signage	To be installed. Update inventory on completion.
Trail Structures	nil
Trail Surrounds	Moderately wooded area on side slope.
Stakeholders & users	Trail acts as an easier cycling only link off the Main Lake trail.
Est. Capital Value	\$8,700
Current IPWEA score	2
Works required	Manage encroaching vegetation, branches and shrubs. Clear drainage to ensure water sheds off trail. Widen trail in narrow sections if required.



Legend

- Tower_Up
- Walking_Trails_Combined
- Shared_Trails_Combined
- Cycling_Trails_Combined
- Management_Vehicle_Access_Track

Tower Up

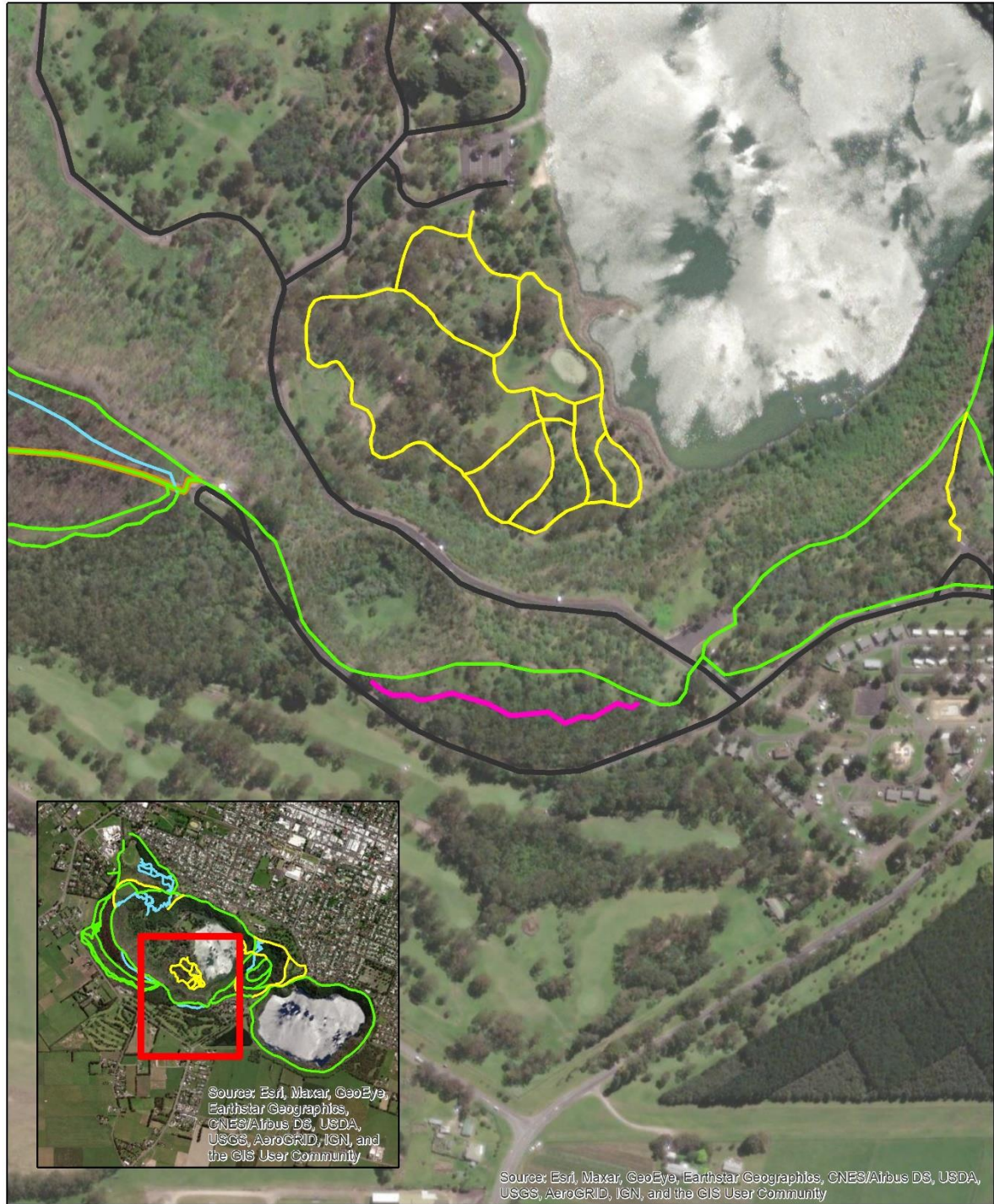
0 70 140 280 Meters



Valley Lake Conservation Park Trails

Trail Name	Valley Lake Conservation Park Trails
Land Tenure	Crater Lakes Trail Network, City of Mt Gambier
Trail Category	Dual direction Walking trails
Trail Classification	AS2156: Grade 2
Trail Description	Dual direction. Compacted rubble.
Trail Length	Unknown (multiple trails)
Trail Signage	To be installed. Update inventory on completion.
Trail Structures	Boardwalks, elevated timber structures (lookouts, bridges, Boardwalks). Some associated park bench furniture
Trail Surrounds	Variety of landscapes from manicured gardens, native vegetation, animal enclosures.
Stakeholders & users	A stand alone park popular with tourists, children, families and the broader community.
Est. Capital Value	Unknown due to extensive elevated built structures.
Current IPWEA score	2
Works required	Managed separately. Elevated structure audits should be programmed.

This separate network of walking trails lies within the enclosed Valley Lake Conservation Park (VLCP) area. The network includes a range of elevated boardwalks, bridges, lookouts and trail infrastructure/furniture. While the other trails in the greater precinct are guided by the Crater Lakes Area Conservation Management Plan 2004, this smaller network is managed under the guidance of the Valley Lake Conservation Park Revegetation and Rehabilitation Plan 2010 which provides a range of aspirational trail related outcomes including trail classification and signage.



Legend

- Walking_Trails_Combined
- Shared_Trails_Combined
- Cycling_Trails_Combined
- Management_Vehicle_Access_Track

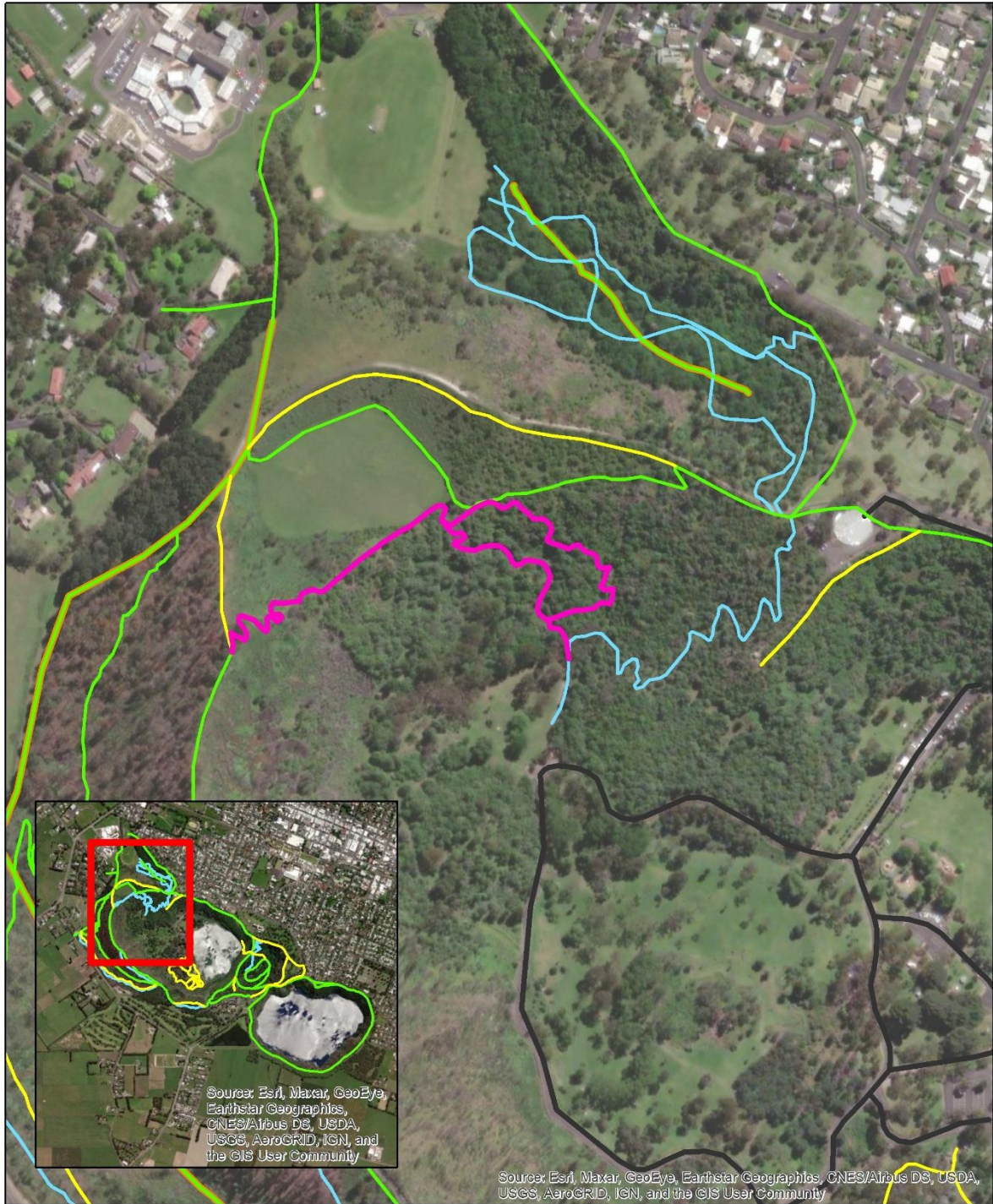
Crater Lakes Trails Valley Lake Carpark to Devils Punchbowl

0 70 140 280 Meters



Wheel Nuts

Trail Name	Wheel Nuts
Land Tenure	Crater Lakes Trail Network, City of Mt Gambier
Trail Category	Mountain Bike Only Trail
Trail Classification	MTBA: Difficult with Extreme features
Trail Description	Natural surface downhill trail with two sperate lines. Optional larger drops and jump features.
Trail Length	1010m
Trail Signage	To be installed. Update inventory on completion.
Trail Structures	Drops, double jumps
Trail Surrounds	Exposed ridge and wooded areas.
Stakeholders & users	Popular for mountain bike riding.
Est. Capital Value	\$30,300
Current IPWEA score	3
Works required	Manage encroaching vegetation, branches and shrubs. Clear drainage to ensure water sheds off trail. Improve drops and jumps. Establish clear A, B and C line sections as two separate trail sections.



Legend

- Walking_Trails_Combined
- Shared_Trails_Combined
- Cycling_Trails_Combined
- Management_Vehicle_Access_Track

Crater Lakes Trails Wheel Nuts Downhill Trail

0 70 140 280 Meters



City of
Mount Gambier

Appendices

Appendix A – Australian Walking Track Grading System





Trail grading or classification allows land managers to develop, design, build, promote and maintain trails appropriate for the anticipated trail users.



Australian Standard 2156.1 Walking Tracks Part 1: Classification and Signage identifies six classes of walking tracks, describing each in terms of the elements used for classification and the resulting management considerations.

AS 2156.1-2001 Walking Tracks - Classification and Signage

The Australian Walking Track Grading System benchmarks to AS 2156.1-2001.

Public land management agencies across Australia have adopted the **Australian Walking Track Grading System** as a plain English language description to describe walks to the public. Under the system, walking trails are graded on a difficulty scale from grades one to five.

	<p>A Grade 1 walk corresponds to AS 2165.1 Class 1 track</p> <ul style="list-style-type: none">• Suitable for the disabled with assistance• Total distance does not exceed 5 km• Well signed, marked and maintained• Well formed track of at least 1.2 m width, surface suitable for wheelchairs• No walking experience required• No steps, or where steps exist a ramp is also provided.
	<p>A Grade 2 walk corresponds to AS 2165.1 Class 2 track</p> <ul style="list-style-type: none">• Suitable for families with young children• Total distance does not exceed 10 km• Generally hardened surface, width of 900 mm or more, well maintained• Trailhead signs and route markers at intersections• Minimal use of steps
	<p>A Grade 3 walk corresponds to AS 2165.1 Class 3 track</p> <ul style="list-style-type: none">• Recommended for people with some bushwalking experience• Total distance does not exceed 20 km• Formed earthen track with a few obstacles (natural hazards), width less than 1.2 m• Trailhead signage and markers where track may be indistinct• Steps may be common.
	<p>A Grade 4 walk corresponds to AS 2165.1 Class 4 track</p> <ul style="list-style-type: none">• Recommended for experienced bushwalkers• Distance may be more than 20 km and require multiple days• Rough track, includes arduous climbs and trail obstacles• Trailhead and some markers as required• Hikers may need to independently navigate.

	<p>A Grade 5 walk corresponds to AS 2165.1 Class 5 and 6 track.</p> <ul style="list-style-type: none"> • Recommended for very experienced bushwalker • Distance may be more than 20 km and require multiple days • Rough track with arduous climbs and trail obstacles • No signage or markers • Hikers will need to independently navigate and be self-sufficient.
	<p>Grade 6 or Class 6 is recommended for very experienced bushwalkers and consists of hiking where no trail exists – the right to roam experience.</p>

Symbols and Descriptions

The Trail Difficulty Rating System (TDRS) outlined below provides seven levels of difficulty for mountain bike trails. The TDRS enables visitors to understand the nature of the trail before beginning their ride and allows them to plan their ride for enjoyment, appropriate level of challenge and safety.

Trail ratings can be communicated in several ways. Pre-visit information may include a more detailed description of the ratings, while a shorter description is required for trailhead signage and maps. Rating colours should be used on all on trail directional signage.

Mountain bike TDRS short trail descriptors should be used at trail signage, on brochures and maps or similar applications.

The use of the bike in the centre of each symbol is optional and will likely depend if the trail network consists of multi-use & shared use trails or single use.

Table 10: Mountain bike TDRS short descriptors

Difficulty Symbol	Short Description
	Very easy Wide trail with a gentle gradient smooth surface and no obstacles Suitable for beginner cyclists with basic bike skills, and most bikes
	Easy Wide trail with a gentle gradient smooth surface Some obstacles such as roots, logs and rocks Suitable for beginner cyclists with basic mountain bike skills, and off-road bikes
	Easy with Intermediate Sections Likely to be single track with a moderate gradient, variable surface and some obstacles Some obstacles such as roots, logs and rocks Suitable for mountain bikers with mountain bikes
	Intermediate Single trail with moderate gradients, variable surface and obstacles May include steep sections Suitable for skilled mountain bikers with mountain bikes
	Intermediate with Difficult Sections Suitable for competent mountain bikers, used to physically demanding routes Expect large and unavoidable obstacles and features Challenging and variable with some steep climbs or descents and loose surfaces
	Difficult Suitable for experienced mountain bikers, used to physically demanding routes Navigation and personal survival skills are highly desirable Expect large, dangerous and unavoidable obstacles and features Challenging and variable with long steep climbs or descents and loose surfaces Some sections will be easier to walk
	Extreme Suitable for highly experienced mountain bikers, used to physically demanding routes Navigation and personal survival skills are highly desirable Severe constructed trails and/ or natural features, all sections are challenging Includes extreme levels of exposure and / or risk Expect large and unavoidable obstacles and features Some sections will be easier to walk

Appendix C- IPWEA Condition Assessment

Open Trails Australia uses The Institute of Public Works Engineering Australasia (IPWEA) 'Simple Approach' model for assessing the condition of the listed trail assets.

The condition assessment tool is an efficient method to rapidly assess and rank the condition of a trail or trail section to help inform the level of maintenance required and/or record the rate of trail degradation in response to other circumstances or pressures.

Rank	Description of Condition
1	Very Good Condition - Only normal maintenance required
2	Minor Defects Only - Minor maintenance required (5%)
3	Maintenance Required to Return to Accepted Level of Service - Significant maintenance required (10-20%)
4	Requires Renewal - Significant renewal/upgrade required (20-40%)
5	Asset Unserviceable - Over 50% of asset requires replacement

Open Trails Australia applies a consistent approach to ranking trails as assets. Some examples of how these are applied.

- A trail that has some minor vegetation encroachment or sedimented drains would be ranked 1 as these issues should be addressed as part of a standard programmed maintenance schedule.
- A trail with minor erosion would be ranked 2 as some additional work may be required to reinforce existing water bars or water management features.
- A trail with more significant erosion would be ranked 3 as new water management devices are required or hardened surfaces are breaking up that would require resurfacing of sections.
- A trail that had unmanageable or unsustainable sections that required re-routes or additional built structures may be ranked as 4.
- Trails that were unmanageable on their current alignment or had completely overgrown due to undefined corridors and lack of use would be ranked 5.